

SPECIAL  
OFFER - SAVE  
**£500**  
PER PERSON

# WONDERS & WILDLIFE OF BORNEO

A JOURNEY AROUND BORNEO ABOARD THE MS ISLAND SKY  
28<sup>TH</sup> JUNE TO 12<sup>TH</sup> JULY & 30<sup>TH</sup> JULY TO 13<sup>TH</sup> AUGUST\* 2026



NOBLE CALEDONIA



Straddling the equator, Borneo is the third largest island in the world and a wildlife wonderland, home to half of all known plant and animal species including some of the rarest and most endangered. It is not one country but shared by the states of Indonesia, Malaysia and Brunei and our exploration will focus on the north and the Malaysian states of Sarawak and Sabah along with their tiny neighbour of Brunei. As with most islands, the best way to explore is by sea and there are marvellous experiences to be had as we discover remote jungle and rainforests on foot or by boat, observe the diverse range of flora and fauna and return each evening to the comforts of the all-suite MS Island Sky to sail on to our next adventure.



Borneo is a truly extraordinary island with vast rainforests, mountains, endemic wildlife and diverse culture, all of which we will discover during this unique small ship adventure. The conditions along with the thousands of years of separation from all other land masses have allowed entirely endemic species to exist meaning witnessing the wildlife here is a unique experience. The island is of course well known for the ‘wild man of Borneo’ – the orangutan and in addition we also hope to see proboscis monkeys, sun bears and hornbills, to name just a few species, in their natural habitat.

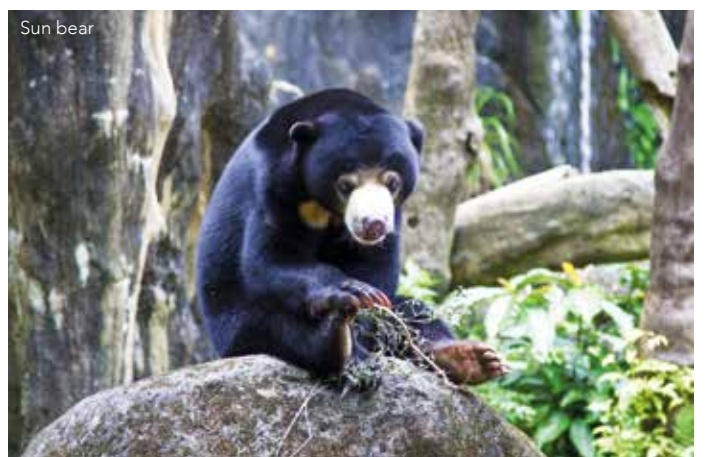
Never far from our minds will be the writings of Conrad and the adventures of James Brooke and the White Rajahs as we journey around the islands, rivers and jungles of Borneo. The privilege of exploring this remarkable land from a small ship and in the company of just 100-fellow passengers, a knowledgeable onboard team and local guides is an opportunity not to be missed. Our voyage will be so much more than a holiday, it promises to be an adventure shared with like-minded travellers.

Mount Kinabalu, Malaysia



## EXPLORING ASHORE

This voyage will appeal to those who enjoy the natural world. Whilst we will be alongside each day, we will be exploring some remote regions and will utilise a range of modes of transport ashore including minibuses, rickshaws and local boats. Singapore and Malaysia are both tropical countries where there is high humidity throughout the day. The shore excursions will be a mix of city tours, guided walks through rainforests and nature reserves and early morning birding walks. Our onboard team will endeavour to arrange a selection of walks to include longer and shorter options to cater for different abilities and interests, however there will be periods of standing and walking on uneven natural terrain. Therefore to best enjoy this itinerary, we do recommend a good level of mobility and if you would like to discuss the level of fitness required, please contact us.







Omar Ali Saifuddien Mosque, Brunei



Proboscis monkeys, Sandakan



Supertrees, Singapore

## The Itinerary

**Day 1 London to Kuala Lumpur, Malaysia.** Fly by scheduled flight to Kuala Lumpur.

**Day 2 Kuala Lumpur.** Arrive and transfer to our hotel for a two night stay. The remainder of the day and evening are at leisure.

**Day 3 Kuala Lumpur.** This morning, we will set out to explore Malaysia's capital city, Kuala Lumpur. Here a walking tour will take us to Independence Square, also known as Dataran Merdeka. This is the historical place where the Union Flag was lowered, and the Malayan flag was raised for the very first time on 31st August 1957. Continue to the Masjid Jamek Mosque, the oldest Islamic place of worship in Kuala Lumpur. Overlooking the Klang River, it offers breathtaking photo opportunities due to the combination of ancient Moorish, Islamic and Mughal architectural styles, verdant surroundings, and distant views of the city's other iconic landmarks. Also see the Central Market, Chinatown and the extravagantly decorated Sri Mahamariamman Temple before ending at the Petronas Twin Towers, once the tallest buildings in the world. After lunch the rest of your afternoon and evening are at leisure to continue exploring independently or relax at the hotel.

**Day 4 Kuala Lumpur to Sandakan.** We will transfer to the airport this morning for our scheduled flight to Sandakan. On arrival we transfer to the MS Island Sky and enjoy welcome drinks and dinner. Moor overnight.

**Day 5 Sandakan.** Today we will learn about the rehabilitation of the orangutans at the Sepilok Centre and hear about their threats to survival. We will visit the Sepilok Forest Reserve feeding platform and see orangutans in the third stage of their rehabilitation programme where the orphaned and injured orangutans are brought to Sepilok to be rehabilitated to return to forest life. Sepilok is a primary lowland forest and the nearest place to visit the virgin jungle of Borneo and one of the few remaining rainforests in Sabah. We can observe the fascinating diversity of plants, trees and wildlife as Sepilok is known to have more than 450 species of trees and over 250 species of birds whilst we also have a good chance of sighting macaques, leaf monkeys and other mammals. Close by is the Sun Bear Conservation Centre. Opened in 2014 this centre provides rehabilitation to the smallest bears in the world which are at risk from deforestation and poaching. Our exploration today will end at the Labuk Bay Proboscis Monkey Sanctuary. These distinctive primates, endemic to Borneo, live mainly in the mangrove and lowland forests near fresh water and rivers.

**Day 6 Sandakan.** For keen nature lovers there will be an excursion to the Rainforest Discovery Centre this morning, one of the most accessible natural rainforests in Sabah. It sits by a lake at the edge of the Kabili-Sepilok Forest

Reserve and is managed by the Sabah Forestry Department which has been in operation since 1996 for the purpose of environmental education. A wonderful park for nature lovers and birdwatchers, we can discover the unique flora and fauna of Borneo. Our walk along the forest trails will lead to the canopy walkway where the centre boasts a pristine lowland dipterocarp forest with an astounding 300 species of birds recorded in the area. Alternatively, the guided tour of Sandakan this morning will include a visit to the lively market and the old-fashioned stone building of St Michael Church, one of the few surviving pre-war stone buildings built in 1893. We will also visit Newlands, the former home of author Agnes Newton Keith. Return to the MS Island Sky for lunch and enjoy a leisurely afternoon on board as we sail to Kota Kinabalu.

**Day 7 Kota Kinabalu.** Today we will explore the city and surroundings of Kota Kinabalu. A full day tour will take us to Kinabalu Park located beneath the jagged granite peaks of Mount Kinabalu. This UNESCO World Heritage Site provides a glimpse into the fascinating plant life of the region. We will walk through the montane oak and chestnut rainforest at park headquarters to view some of the 700 species of orchids, nine species of carnivorous pitcher plants and 27 species of rhododendrons found here. Next, we will visit the botanical gardens where a diverse collection of unique flora is gathered from the entire park and transplanted here for conservation and educational purposes. We will enjoy lunch in the park before returning to the ship later in the afternoon. Alternatively there will be the opportunity to explore the myths and legends of Borneo and delve into the history of the 'headhunters' with a visit to an ancient burial site and the memorial dedicated to the legendary headhunter Monsopiad, here we will learn more about the Kadazan community and the descendants of Monsopiad.

**Day 8 Muara, Brunei.** We arrive this morning in oil-rich Brunei where our full day excursion will include the immense Kianggeh open air market before taking a scenic boat ride on the Brunei River offering views of the magnificent Sultan's Palace. The Istana Nurul Iman is the official residence of the Sultan of Brunei and one of the largest residential palaces in the world. We will also see the colourful water villages built on stilts and connected by wooden walkways before continuing to the stunning Omar Ali Saifuddien Mosque. Our tour will conclude at the Royal Regalia Building, which is home to the Sultan's marvellous collection of royal gifts and ceremonial weapons. After a local lunch we will return to the MS Island Sky and sail in the late afternoon.

**Day 9 At Sea.** As we sail back towards Malaysia you can join a lecture in the lounge or find a spot on deck as we spend a relaxing day at sea.

**Days 10 & 11 Kuching, Malaysia.** This morning, we arrive back into Malaysia where we will spend the next two days in Kuching, exploring the city and





Hornbill



Bako National Park

surrounding natural wonders. There will be a chance to visit nearby Semenggoh Nature Reserve. Since 1975, the wardens here trained young orangutans, who had been orphaned or rescued from captivity, how to survive in the wild. The success of this programme has left the surrounding forest reserve with a thriving population of healthy adolescent and young adult orangutans, who are now breeding in the wild. Besides orangutans, Semenggoh Nature Reserve is also a habitat for rare flora and fauna including the giant squirrel, pigmy squirrel, gibbons and a splendid variety of birds. We will also set out to explore the city of Kuching and learn more about the exploits of the Brooke family who, some 200 years ago, were awarded Sarawak by the former owner, the Sultan of Brunei, in recognition for the aid provided in defeating a rebellion. See Fort Margherita which was built in 1879 to guard Kuching's River approaches from pirates and the Chinese History Museum which houses many artefacts of past eras and memorabilia of Chinese affairs during the time of Charles Vyner Brooke, also known as the White Rajah in Sarawak history. During our time in Kuching we will also visit Bako National Park, the oldest national park in Sarawak which is known for its amazing diversity containing almost every type of vegetation found in Borneo. Established in 1957 it occupies more than 27 square kilometres of rainforest, waterfalls, secluded beaches and rocky shorelines. On a series of guided nature walks for all levels we will explore the jungle keeping an eye out for proboscis monkeys, long tailed macaques, silvered langurs, monitor lizards and bearded pigs as well as some of the 190 species of birds that can be found here.

**Day 12 At Sea.** Spend the day at sea, join a lecture in the lounge and relax on deck.

**Day 13 Singapore.** Spend today in Singapore where there will be a choice of excursions this morning. A city tour will start in Little India and include the magnificent Sultan Mosque before we head to vibrant Chinatown. Here narrow streets centered on the pagoda will lead us to a treasure trove of apothecary shops, quaint teahouses and a cornucopia of stalls selling trinkets as well as the oldest Hindu temple in Singapore, Sri Mariamman. Here we join a cruise along the Singapore River sailing past a mix of colonial buildings and modern skyscrapers ending at Merlion Park. Alternatively, you can choose to visit the National Orchid Garden which displays the largest collection of orchids in the world with 2000 hybrids. The afternoon will be at leisure to explore the city further at your own pace.

**Day 14 Singapore to London.** Disembark this morning and transfer to the airport for our scheduled flight to London.

**Day 15 London.** Arrive this morning.

\*Please note that the 30th July departure operates in the reverse direction from Singapore to Kuala Lumpur. Full itinerary can be viewed online.



Petronas Towers, Kuala Lumpur

## PRICES PER PERSON

Based on double occupancy

### SPECIAL OFFER – SAVE £500 PER PERSON FOR A LIMITED TIME ONLY

Deck	Suite Category	Brochure Price	Special Offer Price
Magellan	Standard	£9395	£8895
Columbus	Superior	£9595	£9095
Marco Polo	Premium	£9895	£9395
Marco Polo	Corner	£10295	£9795
Erikson	Deluxe Balcony	£11095	£10595
Explorer	Owner's Balcony Suites	£11495	£10995
Explorer	Island Suite	£12495	£11995
Magellan	Standard for sole use	£12195	£11695
Columbus	Superior for sole use	£12495	£11995

**PRICE INCLUDES:** Economy class scheduled air travel • Two nights hotel accommodation in Kuala Lumpur with breakfast • Lunch on day 3 (day 13 for July departure) • 10 nights aboard the MS Island Sky on a full board basis • House wine, beer and soft drinks with lunch and dinner • Noble Caledonia onboard team • Shore excursions • Gratuities • Transfers • Airport taxes • Port taxes.

**Not Included:** Travel insurance, dinners whilst in Kuala Lumpur.



# MS ISLAND SKY



Friendly Service



Deluxe Balcony Suite



The Restaurant

The much loved MS Island Sky is one of our two flagships and sister vessel to the MS Hebridean Sky. Both vessels were built in the same shipyard in Italy at similar times and share the same excellent attributes that make them two of the finest small ships in the world. With a maximum passenger capacity of only 118, a vessel of her size is capable of carrying many more but instead the MS Island Sky has the benefit of unusually large suites, luxuriously appointed public areas and spacious outside decks.

## Your Suite

On board there are 59 exceptionally spacious and well-designed suites. All feature a seating area and some have private balconies, whilst those on the Marco Polo Deck feature tinted, sliding glass doors allowing greatly enhanced viewing opportunities and quick access to the deck. The feeling of luxury is enhanced by the wood panelling and brass, which predominates throughout the vessel conveying the atmosphere of a private yacht. The passenger accommodation is arranged over five decks and each suite affords considerable comfort with en-suite bathroom featuring marble-topped vanity unit with sink and walk-in shower, a large wardrobe, dressing table and excellent storage. There is a mini-fridge, television and a telephone in each suite. Refillable water bottles, dressing gowns and slippers are also provided for your comfort. Other facilities include a safe, hairdryer, assorted Noble Isle toiletries, air-conditioning and heating. The comfortable beds in each suite can be configured as either double or twin.

## Your Dining

With only one sitting and a maximum of just over 100 passengers, the cuisine on board the MS Island Sky is of a consistent superior quality that befits such a vessel. In keeping with the informal atmosphere on board, when dining you are able to choose your seating arrangements and choice of restaurants at your leisure; whether that be joining a table of four to six other passengers in the elegant à la carte Restaurant or outside buffet-style on the Lido Deck in the evening sunshine. In the main Restaurant, breakfast is served buffet-style, with certain items cooked to order on request. Lunch and dinner menus offer plenty of choice, often reflecting the daily catch and local delicacies. The Welcome and Farewell dinners are a sumptuous five course affair. To enhance your dining experience further a selection of wines is included with both meals. Afternoon tea and pre-dinner canapés take place in either the comfort of the Lounge or Club. Tea and coffee are also available 24 hours a day. Special diets can be catered for with sufficient notice.



Superior Suite



The Club



The Library

## Your Space

The spacious and finely decorated public rooms include a large Lounge on the Columbus Deck featuring a selection of seating options from individual armchairs and sofas to side cushioned benches. Daily briefings given by the Cruise Director and talks from Guest Speakers and expedition staff take place in the Lounge. In addition to the main Lounge, there is also The Club, located on the Marco Polo Deck which features the main bar. The Club also features a 24-hour tea and coffee station. Towards the aft of the ship on the Columbus Deck is the Library. Well stocked with reference books pertaining to the destinations the vessel is visiting and a selection of essential reads, you will not find yourself short of excellent literature on board. A collection of games as well as devices to access the internet via the ship's satellite can also be found in the Library. Access to the ship's satellite Wi-Fi via your own device is complimentary on board (*signal strength varies depending on location and demand*). The main Restaurant, which can seat all guests at one sitting, is located on the Magellan Deck, and outside there is a rear Lido Deck located on the Erikson Deck where meals are served in warm weather under shade. Further to this on the top Explorer Deck there is an observation area ideal for spotting wildlife, complete with sun loungers for sunbathing, relaxing with a book or catching up with fellow travellers. The Promenade Deck wraps around the whole ship giving outstanding views. There is also a small beauty salon on board with appointments made on request.

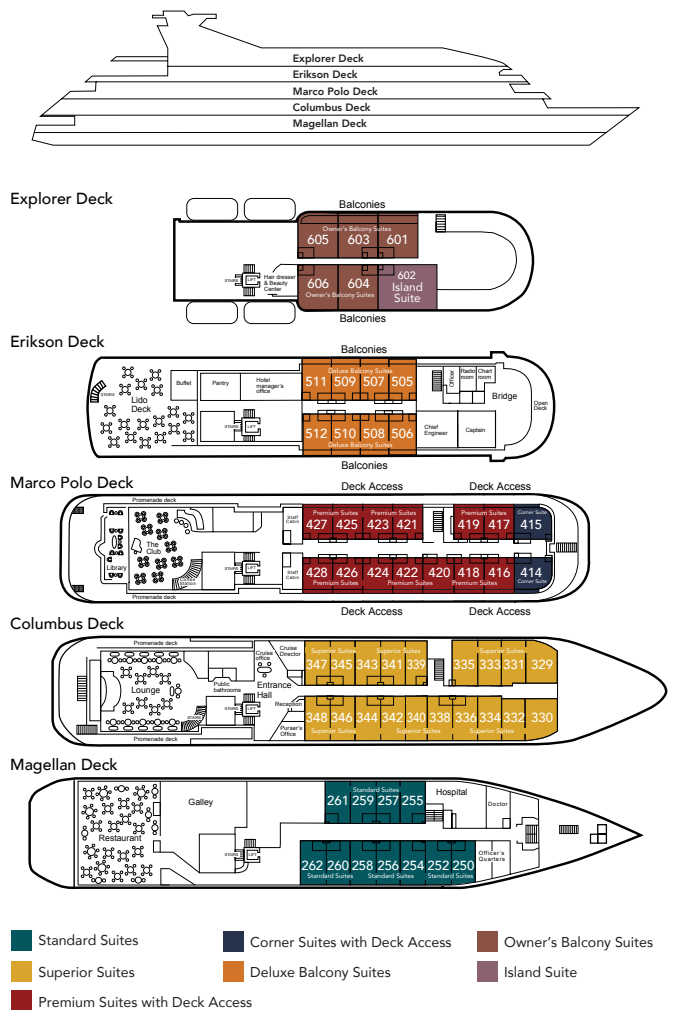
## Your Comfort

The MS Island Sky is equipped with the latest safety, navigation and communications equipment along with roll stabilisers to minimise the ship's motion. During your voyage we hope to offer you the opportunity to visit the Captain and Officers on the Bridge to check the vessel's progress by charts and learn more about your journey. On board you will also find a clinic and Doctor and a lift that serves all decks. When at anchor our nimble Zodiacs will ferry you ashore or, on select cruises, enjoy Zodiac cruises getting you closer to the natural world.

## Your Life On Board

The atmosphere on board is warm and convivial and more akin to a private yacht or country hotel in which you can learn more about wonderful destinations you are visiting in the company of like-minded people. There is a high ratio of crew to passengers and our friendly crew of 75 are mainly Filipino and Eastern European and our Captains are experienced mariners. After a day ashore you will return to the comfort and peace of a well-run and exceedingly comfortable ship where peace, high quality of service and attention to detail are the order of the day. A little music in the Lounge after dinner, Guest Speakers and informative port briefings and of course good food, all contribute to make any voyage aboard this wonderful vessel a memorable and joyful experience.

## MS ISLAND SKY DECK PLAN



# NOBLE CALEDONIA

2 Chester Close, Belgravia, London, SW1X 7BE  
 +44 (0)20 7752 0000 | info@noble-caledonia.co.uk  
 www.noble-caledonia.co.uk



All special offers are subject to availability. Our current booking conditions apply to all reservations and are available on request.  
 Cover image: Orangutan and baby.