

ROUND TRIP SCOTLAND TO NORWAY CRUISE – NO FLY VOYAGE

SPECIAL  
OFFER – SAVE  
**£300**  
PER PERSON

# NORWEGIAN COASTAL ODYSSEY

A summer voyage from Aberdeen to the Norwegian Coast  
aboard the MS Hebridean Sky

11<sup>th</sup> to 21<sup>st</sup> July 2026

NOBLE CALEDONIA





MS Hebridean Sky, Sognefjord

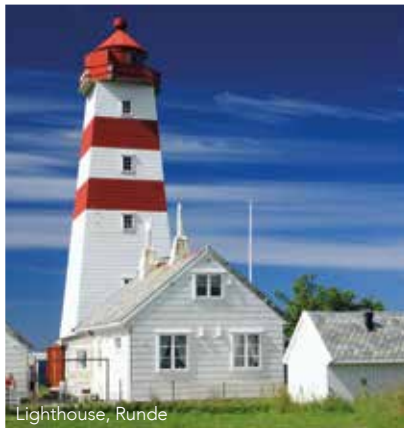
Join us aboard the MS Hebridean Sky for our summer voyage to Norway, one of Europe's most beautiful and awe-inspiring countries. Our roundtrip sailing departs from Aberdeen and on our way north we will call into the remote Shetland Islands to learn of the many legends that have shaped this mystical place. Continuing to Norway we begin our navigation of its stunning coastline with its unhampered landscape and pristine wilderness promising to delight those with a love for the natural world.

We will spend seven days exploring Norway and our itinerary combines the wonders of the natural world with the historical and cultural highlights of the area. Of historical interest will be our time spent in the old town of Stavanger where we will see the traditional 19th century wooden buildings and whilst in Vikoyri, location of the oldest stave church in existence, we will see the nearby Moahaugane burial mounds which originate from 200-400 AD. In addition, we explore Haugesund, the region which has laid claim to the title of Norway's Birthplace and Homeland of the Viking Kings.

Amongst the many opportunities to witness Norway's epic scenery will be our exploration of the stunningly beautiful Hardangerfjord with its magnificent Langfoss waterfall, a cruise on the lovely Loen Lake surrounded by majestic mountains and our time spent in Dalsfjord, a little known fjord arm from where we travel to the spectacular landscape of Sunnfjord and 'waterfall country'. We also cruise by the bird cliffs at Runde, one of the largest nesting cliffs in Norway and home to more than 240 species of birds.

There is no better way to explore this endlessly fascinating region than aboard the 118-passenger MS Hebridean Sky and joining you on board will be an expert team who have been selected for their enthusiasm, professionalism and specialist knowledge of the natural world. The region is simply perfect for exploration by small ship and with over 30 years of experience in operating cruises in Norway, we believe we have the perfectly balanced itinerary featuring as it does a combination of majestic fjords, small towns, cultural history and wildlife. Our days will be spent on guided excursions with local guides, on walks with our naturalists and on deck of the MS Hebridean Sky as we cruise amongst the fjords.





## The Itinerary

**Day 1 Aberdeen, Scotland.** Embark the MS Hebridean Sky this afternoon. Transfers will be provided from Aberdeen Airport and Railway Station at a fixed time. Sail this evening.

**Day 2 Lerwick, Shetland Islands.** After a morning at sea we arrive in the Shetland capital from where we have a choice of options. Maybe visit the remarkable archaeological site of Jarlshof which was uncovered by a violent storm in the winter of 1896/7, revealing an extraordinary settlement site embracing at least 5000 years of human history. The site contains a remarkable sequence of stone structures – late Neolithic houses, a Bronze-Age village, an Iron-Age broch and wheelhouses, several Norse longhouse, a Medieval farmstead, and the 16th century laird's house. Alternatively join a walking tour of the historic port. Explore the narrow stone lanes before visiting the excellent Shetland Museum which features artefacts from shipwrecks and the whaling era.

**Day 3 Stavanger, Norway.** Spend the morning at sea as we cross to Norway arriving into Stavanger at lunchtime. This afternoon we have the chance to stroll in the small harbour with its multi-coloured traditional wooden buildings. Old Stavanger is a cluster of 173 small white wooden houses built in the 19th century which house craft shops, galleries and museums. We sail late this evening for anyone wishing to enjoy an evening ashore.

**Day 4 Rosendal.** Sail this morning into Hardangerfjord, the third largest fjord in the world. We will anchor and use our Zodiacs to land at Rosendal from where we drive along the fjord towards the small part of the Hardangerfjord called Maurangerfjord, experiencing the idyllic scenery and farms along the way and viewing the magnificent Langfoss waterfall. When we arrive at the small village of Sunndal we will walk to Bondhus Lake which is surrounded by a fascinating landscape of fjords and mountains. After lunch on board we have free time to explore the town, maybe visit the 12th century Kvinnherad Church, the Stone Park or see the gardens at Barony Rosendal.

**Day 5 Vikoyri.** Cruise this morning through the scenic Sognefjord towards the small village of Vikoyri. An afternoon walk will include the richly decorated Hopperstad Stave Church which was built in 1130 and is the oldest stave church in existence. We also see the 12th century Hove stone church and the nearby Moahaugane burial mounds which originate from 200-400 AD. There will also be the opportunity to try the local cheese

delicacy of "gamal ost", the recipe for which originated from the Vikings and it is still in production at the dairy in Vikoyri. Return to the MS Hebridean Sky via the picturesque homes and boathouses.

**Day 6 Loen, Nordfjord.** Today we leave the charming village of Loen and take a drive to the Kjenndal valley where we board a small boat to experience the lovely Loen Lake, passing through majestic mountains covered by protruding glacier arms. Upon reaching Kjenndalsbre Fjellstove we will enjoy a short break with homemade Norwegian waffles. We continue to the Kjenndalsbre glacier viewpoint, an arm of the mighty Jostedal Glacier, the largest in mainland Europe. After lunch on board enjoy some free time in Loen, maybe take a trip on the cable car which rises 1100 metres and offers wonderful views over the fjord below. Sail in the early evening to enjoy the scenery of Nordfjord.

**Day 7 Alesund & Runde.** Spend the morning in Alesund, one of the most beautiful towns in Norway. We will explore the streets with their Art Nouveau buildings and those feeling active can take a walk up Mount Aksla, climbing the 418 steps for magnificent views of the town, islands and Sunnmore Alps. In the late afternoon we will cruise by the bird cliffs at Runde, one of the largest nesting cliffs in Norway and home to half a million birds. More than 240 different species have been observed here including puffins, gannets, razorbills and northern fulmar.

**Day 8 Dalsfjord & Bygstad.** Dalsfjord lies at the heart of Western Norway with its starkly contrasting fjord scenery, halfway between Bergen and Alesund. This little-known fjord arm has a gentler landscape where powerful and diverse watercourses have left their impression on the scenery and settlements. Today's tour will take us through this beautiful environment and over to Sunnfjord with its magnificent waterfalls and mountains. We will visit Sunnfjord Museum, which provides an insight into how life was in local settlements in the mid 1800s, before taking a scenic drive to the region known as 'waterfall country'. Here we will stop at the Huldefossen and Likholefossen waterfalls before returning via the Hestadfjord where we find the 19th century Hestad Church located in idyllic surroundings.

**Day 9 Haugesund.** At breakfast we arrive in Haugesund where, a thousand years ago, King Harald Fairhair united Norway into a single kingdom, and it was from this area that the Viking Kings ruled Norway for more than 500 years. The region has laid claim to the title of Norway's Birthplace and Homeland of the Viking Kings. This morning we will visit the 13th century St Olav's Church





Haugesund

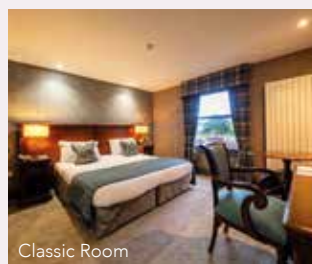


Hardangerfjord

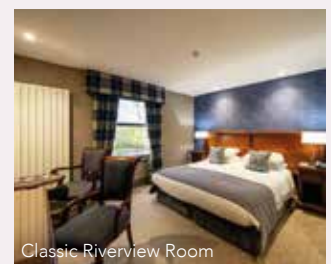
## Pre-cruise Aberdeen Extension 9<sup>th</sup> to 11<sup>th</sup> July 2026

If you would like to spend some time in Aberdeenshire before embarking on your cruise, you can join our two night stay at one of the region's most historic hotels, nestled on the banks of the graceful River Dee.

### MARYCULTER HOUSE HOTEL



Classic Room



Classic Riverview Room

The beautiful Maryculter House Hotel can trace its history right back to the time of the Great Crusades and, dating back to 1460, the atmospheric Great Hall is the most ancient part of the hotel remaining. Many of the property's 40 bedrooms boast stunning views, and all feature contemporary Scottish interiors that have undergone a recent refurbishment. Relax in the comfortable beds, luxuriate in the stylish bathrooms and enjoy the personal touches of Scottish hospitality, all in a wonderfully calm and restful property that is the perfect base for our exploration of this beautiful part of Scotland. The hotel's restaurant which serves the finest in local, seasonal produce expertly created by a team of talented chefs, overlooks the river and provides a wonderful setting for your meals each evening.

### The Itinerary

**Day 1 Maryculter House Hotel, Aberdeen, Scotland.** Make your way to Aberdeen where a transfer will be available from Aberdeen Airport or Railway Station to the Maryculter House Hotel at a fixed time. Check in is available from the mid-afternoon. After some free time to settle into your room we will meet tonight for dinner in the hotel. (D)

**Day 2 Maryculter House Hotel.** Spend the day at leisure to relax in the hotel, explore the grounds or maybe take a local excursion to one of the nearby castles or into Aberdeen. This evening we will meet for a drink and dinner in the hotel. (B, D)

**Day 3 Maryculter House Hotel to the MS Hebridean Sky.** Check out in the late morning and meet for lunch prior to transferring to the MS Hebridean Sky in Aberdeen in the late afternoon. (B, L)

### PRICES PER PERSON

Based on double occupancy

|  |             |
|--|-------------|
| <b>Classic Room Twin/Double:</b>             | <b>£595</b> |
| <b>Classic Riverside Room Twin/Double</b>    | <b>£625</b> |
| <b>Classic Room Sole Occupancy</b>           | <b>£725</b> |
| <b>Classic Riverside Room Sole Occupancy</b> | <b>£775</b> |

**Price Includes:** Two nights hotel accommodation at Maryculter House, meals as indicated (B - Breakfast, L - Lunch, D - Dinner), Noble Caledonia Tour Manager, gratuities, transfers.

**Not Included:** Travel insurance.

before learning about the Viking Age at the Nordvegen Heritage Centre. This afternoon you can choose to explore further at your own pace or join the guided visit to the charming old town of Skudeneshavn which consists of 130 white wooden houses originating from the 1800s, when herring fishing was at its peak. We will stroll through the streets and our guide will share stories about the locals that lived here before we visit the Maelandsgarden Museum which highlights the development of the town.

**Day 10 At Sea.** Enjoy a relaxing day at sea as we return to Scotland.

**Day 11 Aberdeen, Scotland.** Disembark after breakfast. Transfers will be provided to Aberdeen Airport and Railway Station at a fixed time.

### SHIP TO SHORE

This cruise is not classified as an expedition cruise; however please note that Zodiac landing craft will be used to transfer guests from ship to shore in Rosendal, Vikoyri and Loen where the ship will be at anchor.

### PRICES PER PERSON

Based on double occupancy

#### SPECIAL OFFER – SAVE £300 PER PERSON FOR A LIMITED TIME ONLY

| Deck       | Suite Category        | Brochure Price | Special Offer Price |
|------------|-----------------------|----------------|---------------------|
| Amundsen   | Standard              | £6795          | £6495               |
| Byrd       | Superior              | £6995          | £6695               |
| Mawson     | Premium               | £7395          | £7095               |
| Mawson     | Corner                | £7895          | £7595               |
| Scott      | Deluxe Balcony        | £8695          | £8395               |
| Shackleton | Owner's Balcony       | £9095          | £8795               |
| Shackleton | Hebridean             | £9395          | £9095               |
| Amundsen   | Standard for sole use | £8795          | £8495               |
| Byrd       | Superior for sole use | £8995          | £8695               |

**PRICE INCLUDES:** 10 nights aboard the MS Hebridean Sky on a full board basis

- House wine, beer and soft drinks with lunch and dinner
- Noble Caledonia onboard team
- Shore excursions
- Gratuities
- Transfers
- Port taxes.

**Not Included:** Travel insurance.

# MS HEBRIDEAN SKY



Alfresco Dining



Owner's Balcony Suite



The Restaurant

The much loved MS Hebridean Sky is one of our two flagships and sister vessel to the MS Island Sky. Both vessels were built in the same shipyard in Italy at similar times and share the same excellent attributes that make them two of the finest small ships in the world. With a maximum passenger capacity of only 118, a vessel of her size is capable of carrying many more but instead the MS Hebridean Sky has the benefit of unusually large suites, luxuriously appointed public areas and spacious outside decks.

## Your Suite

On board there are 59 exceptionally spacious and well-designed suites. All feature a sitting area and some have private balconies. The feeling of luxury is enhanced by the wood panelling and brass, which predominates throughout the vessel conveying the atmosphere of a private yacht. The passenger accommodation is arranged over five decks and all suites have outside views with those on the Scott and Shackleton Decks featuring private balconies. Each suite affords considerable comfort with en-suite bathroom featuring vanity unit with sink and walk-in shower, large wardrobes, dressing table with large mirror and stool and excellent storage. There is a mini-fridge, television and a telephone in each suite. Refillable water bottles, towelling dressing gowns and slippers are also provided for your comfort. Other facilities include a programmable electronic safe, hairdryer, assorted Noble Isle toiletries and individually controlled air-conditioning and heating. Soft hues and blended tones enhance the traditional maritime style making the passenger accommodation an inviting and relaxing place to be.

## Your Dining

With only one sitting and a maximum of just over 100 passengers, the cuisine on board the MS Hebridean Sky is of a consistent superior quality that befits such a vessel. In keeping with the informal atmosphere on board, when dining you are able to choose your seating arrangements and choice of restaurants at your leisure; whether that be joining a table of four to six other passengers in the elegant à la carte Restaurant or, outside buffet-style on the Lido Deck in the evening sunshine. In the main Restaurant, breakfast is served buffet-style, with certain items cooked to order on request. Lunch and dinner menus offer plenty of choice, often reflecting the daily catch and local delicacies. The Welcome and Farewell dinners are a sumptuous five course affair. To enhance your dining experience further a selection of wines is included with both meals. Afternoon tea and pre-dinner canapés take place in either the comfort of the Lounge or the Club. Tea and coffee are also available 24 hours a day. Special diets can be catered for with sufficient notice.





The Library



Superior Suite



The Club

### Your Space

The spacious and finely decorated public rooms include a large Lounge on the Byrd Deck featuring a selection of seating options from individual armchairs and sofas to side cushioned benches. Daily briefings given by the Cruise Director and talks from Guest Speakers and expedition staff take place in the Lounge. In addition to the main Lounge, there is also The Club, located on the Mawson Deck which features the main bar. The Club also features a 24-hour tea and coffee station. Towards the aft of the ship on the Mawson Deck is the Library. Well stocked with reference books pertaining to the destinations the vessel is visiting and a selection of essential reads, you will not find yourself short of excellent literature on board. A collection of games and devices to access the internet via the ship's satellite can also be found in the library. Access to the ship's satellite Wi-Fi via your own device is complimentary on board (*signal strength varies depending on location and demand*). The main Restaurant, which can seat all guests at one sitting, is located on the Amundsen Deck, and outside there is a rear Lido Deck located on the Scott Deck where meals are served in warm weather under shade. Further to this on the top Shackleton Deck there is an observation area, complete with sun loungers for sunbathing, relaxing with a book or catching up with fellow travellers. The Promenade Deck wraps around the whole ship providing outstanding views. There is also a small beauty salon on board with appointments made on request.

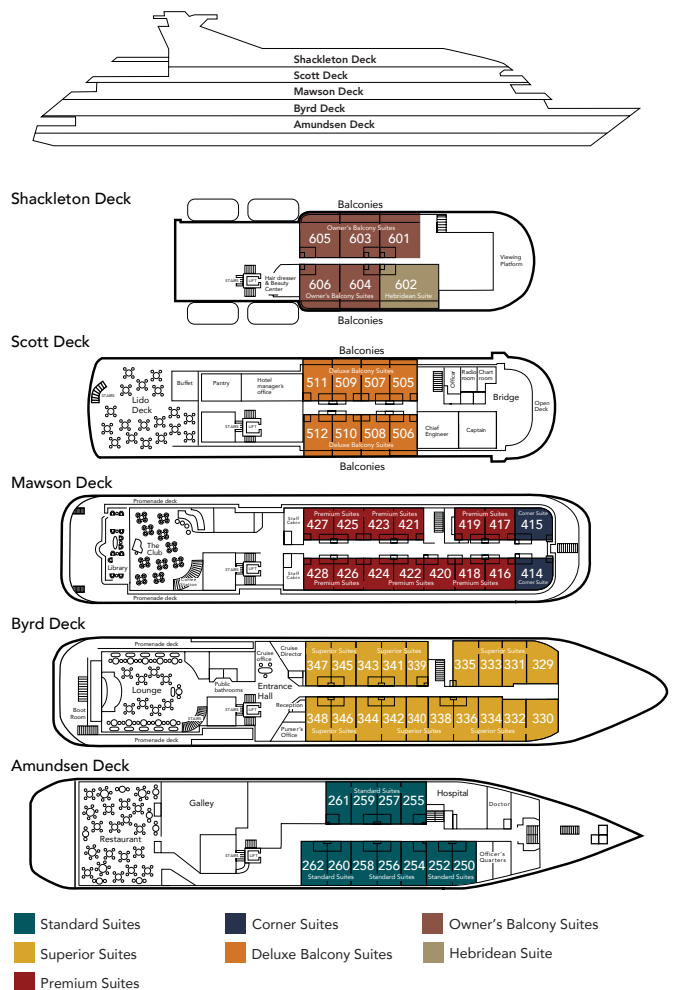
### Your Comfort

The MS Hebridean Sky is equipped with the latest safety, navigation and communications equipment along with roll stabilisers to minimise the ship's motion. During your voyage we hope to offer you the opportunity to visit the Captain and Officers on the Bridge to check the vessel's progress by charts and learn more about your journey. On board you will also find a clinic and Doctor and a lift that serves all decks. When at anchor our nimble Zodiacs will ferry you ashore or, on select cruises, enjoy Zodiac cruises getting you closer to the natural world.

### Your Life On Board

The atmosphere on board is warm and convivial and more akin to a private yacht or country hotel in which you can learn more about the wonderful destinations you are visiting in the company of like-minded people. There is a high ratio of crew to passengers and our friendly crew of 75 are mainly Filipino and Eastern European and our Captains are experienced mariners. After a day ashore you will return to the comfort and peace of a well-run and exceedingly comfortable ship where peace, high quality of service and attention to detail are the order of the day. A little music in the Lounge or bar after dinner, Guest Speakers and informative port briefings and of course good food, all contribute to make any voyage aboard this wonderful vessel a memorable and joyful experience.

### MS HEBRIDEAN SKY DECK PLAN



Please note that beds in each suite can be configured as double or twin with the exception of suites 601 and 602 which feature a fixed double bed.



## NOBLE CALEDONIA

2 Chester Close, Belgravia, London, SW1X 7BE  
 +44 (0)20 7752 0000 | info@noble-caledonia.co.uk  
 www.noble-caledonia.co.uk



All special offers are subject to availability. Our current booking conditions apply to all reservations and are available on request.  
 Cover image: Hardangerfjord.