



UNDER THE NORTHERN LIGHTS

An expedition in Norway in search of the Northern Lights aboard the MV Quest
21st to 28th February & 12th to 19th March 2024

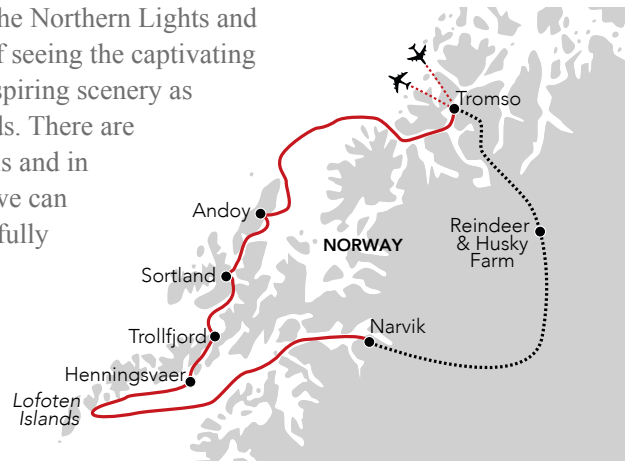
NOBLE CALEDONIA



Lofoten Islands

Northern Norway is one of the best places in the world to see the Northern Lights and this expedition has been designed to maximise the chances of seeing the captivating aurora borealis as well as to experience the raw beauty and awe-inspiring scenery as we take in views of dramatic mountains and truly magnificent fjords. There are few phenomena that capture the imagination like the aurora borealis and in February and March, when the sun never rises above the horizon, we can expect magnificent displays with the flashing lights forming beautifully coloured arcs in the sky.

Sailing from the Arctic capital, Tromsø, this unique itinerary will combine the wonders of the natural world with the adventurous Arctic activities on offer. We will travel to Sortland to meet the indigenous Sami and learn of their history, traditions and remarkable subsistence lifestyle, spend time exploring the narrow and deep sided Trollfjord where we hope to make use of the Zodiacs as well as to spot the rare white-tailed eagle, and also enjoy a full day in the enchanting Lofoten Islands where in the historical fishing town of Nusfjord we will learn of the Viking history. Other highlights include our trip on the Arctic Train to a northern lights' basecamp, and an excursion to a wilderness camp where we will enjoy a Husky dog sled ride whilst taking in the spectacular mountain scenery. In addition we will have two overnight stays in Tromsø enabling a trip on the Fjellheisen cable car, providing stunning panoramic views across the city and its surrounding fjords.



For this expedition we are working with our associates at Norwegian Travel who have provided us with an allocation of cabins aboard MV Quest and this is a wonderful opportunity to visit one of Europe's most beautiful regions in search of the Northern Lights in the company of just 50 or so fellow guests. The unique MV Quest really is a gem of an expedition ship and with her expert team and fleet of Zodiacs is the ideal vessel to get up close to nature and explore areas inaccessible to larger vessels.

Henningsvaer harbour



Dog sledding



Sami and Reindeer



Humpback whale



The Itinerary

Day 1 London to Tromso, Norway. Fly by scheduled indirect flight and on arrival transfer to our hotel for an overnight stay. This evening is at leisure to relax and explore independently.

Day 2 Tromso. After a leisurely morning we will meet in the late afternoon for our transfer to the MV Quest. After embarkation and the safety briefing, we will enjoy dinner on board. Later, during our first excursion we take the Fjellheisen cable car and hope to see the northern lights from the top of the Storsteinen Mountains which also offer spectacular views over Tromso and its fjords. Return to the ship and sail tonight.

Day 3 Andoy & Sortland. This morning we wake up northwest of Andoy, a leading whale watching destination in Norway though it is also open sea with unpredictable sea conditions. Here we will search for whales and if conditions permit, we have the option of docking to learn about whale migration patterns and other interesting facts at the local museum. After lunch we will continue sailing towards Sortland until we reach a Sami camp where we will learn about their culture and their long history with reindeer herding before we have the opportunity to feed and engage with the reindeer.

Day 4 Trollfjord & Henningsvaer. Today we will sail towards Raftsundet and into the famously beautiful Trollfjord where if the weather permits, we will launch our Zodiacs. This will get us close and personal to the majesty of the mountains on both sides on this narrow and beautiful path and we may even spot the rare large bird of prey of the area, the white-tailed eagle. Afterwards, we continue sailing on to our next excursion in Henningsvaer "the Venice of the North." We will learn of the history of cod in this fishing village and the significance it has on Norwegian history as our fisherman guide will take us on a 200-year journey of the famous Full Steam, a cod liver oil factory.

Day 5 Lofoten Islands. Arriving in the Lofoten Islands we head to the World Heritage Site of Nusfjord, one of the oldest and best-preserved fisherman's villages in Norway. Landing by Zodiacs, we take a guided tour through the village, conserved as a museum, and learn about the historic Arctic lifestyle of fisherman. We will then travel together back over 1,000 years in time during our visit to the famous Lofotr Viking Museum and the longest Viking Longhouse. Here we will enjoy a Viking feast for lunch, whilst being entertained by Viking traditions, after which we will travel to "the gate of the Lofoten Islands", Svolvær. This is a town with a surprisingly rich urban life contrasting with the breathtaking natural scenery and after dinner, we will have the opportunity to take a walk to explore and hopefully experience the northern lights.

Day 6 Narvik. As we cruise this morning we will spot the Barøy Lighthouse which will be the signal that we are nearly at the historically significant town of Narvik. As we travel, you may wish to face a challenge of endurance: a polar plunge into the Arctic Sea. We will first be educated on the benefits and techniques and will practice what we have learned before deciding to take on the cold. We will then head to Narvik, where the most significant World War II battle on Norwegian ground took place. Here you will have time at leisure to explore this historical mining port and a choice of museums that you can visit. Our day ends with a trip on board the Arctic Train, learning about the northern lights while experiencing the scenic journey travelling to a northern lights' basecamp, a perfect place to hopefully see the aurora borealis.

Day 7 Narvik to Tromso. Disembark this morning as we drive to a wilderness camp where we will meet adorable huskies and experience sledding with them. After our dog sledding excursion, we will have an opportunity to bond and take pictures with our energetic husky partners before having a cosy meal by a fire. Later this afternoon we return to Tromso and transfer to our hotel for an overnight stay.

Day 8 Tromso to London. After breakfast in the hotel we will transfer to the airport for our scheduled indirect flight to London.

PRICES PER PERSON

Based on double occupancy

Cat	Cabin Description	Price
F	Deck 3 Triple (2 lower berths/1 upper)	On Request
E	Deck 3 Twin	£4595
D	Deck 3 Superior Twin	£4795
C	Deck 3 Double	£5095
B	Deck 3 & 4 Superior Double	£5395
A	Deck 4 Owner's Double	£6395
E	Deck 3 Twin for sole use	£6795

PRICE INCLUDES: Economy class scheduled air travel • Two nights hotel accommodation in Tromso with breakfast • Five nights aboard the MV Quest on a full board basis • Expedition team • Noble Caledonia Tour Manager • Shore excursions • Gratuities • Transfers • Port taxes • Airport taxes.

Not Included: Travel insurance, lunch on days 1 & 2, dinner on days 1 & 7, drinks.

NB: The Northern Lights are a natural phenomenon so sightings cannot be guaranteed and are weather dependent.



MV Quest



Restaurant



Category B Cabin

MV QUEST

The MV Quest is the ideal small expedition ship, accommodating a maximum of 53 passengers in attractive and comfortable cabins with outside views. Built in Denmark in 1992, this stout-hearted ship can operate in the most demanding and difficult places. As you would expect from a vessel designed and built in Denmark, she is comfortable and up to date with all the latest safety and communications equipment and her small size allows her to venture where larger ships cannot.

Your Cabin

Passenger cabins are located on two decks and cabins are priced according to size and location. All have outside views, individually controlled heating and air-conditioning, private shower and toilet. They are well designed with typical Scandinavian light woods and pleasing colours. The superior grade cabins on decks three and four are spacious and have a seating area. The owner's cabin on deck four is also spacious, has two large picture windows and is in the prime location on the vessel.

Your Space

The Panorama Lounge located on the top deck affords excellent views and is the main meeting place. It is here that the expedition team will provide informative and informal talks and briefings. The bar and a small library are also located in the lounge. When conditions permit, the Bridge is open to passengers and here the officers will provide charts and sailing information for all those interested in the vessel's navigation and operation.

Your Dining

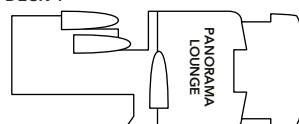
The attractive dining room seats all passengers in a single sitting and offers delicious meals with a mixture of table service and buffet. It is comfortable and spacious enough to accommodate all passengers and expedition staff in one seating. The informal dining arrangement adds to the friendly atmosphere on board and meals are a great chance to discuss all you have seen with your fellow travellers, and for the expedition team to share their knowledge.

Life On Board & Exploring Ashore

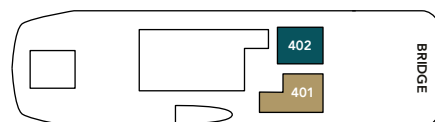
The atmosphere on board is informal and time on board is often spent out on deck keeping watch for wildlife or admiring the spectacular view. The schedule can change due to weather conditions or unexpected wildlife sightings which adds to the adventure. Daily briefings from the expedition team will prepare you for each day's activities.

DECK PLAN

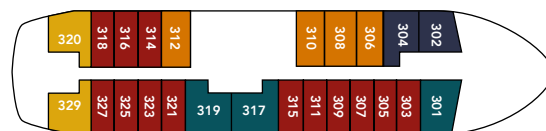
DECK 4



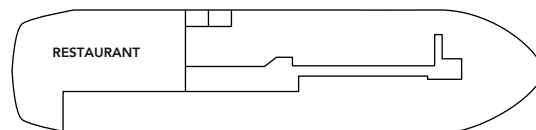
DECK 4



DECK 3



DECK 2



- CATEGORY A
- CATEGORY B
- CATEGORY C
- CATEGORY D
- CATEGORY E
- CATEGORY F



During this voyage you will be visiting out of the way destinations and will be accompanied by an expedition team. Landings and excursions will be made by Zodiac landing craft. This cruise will appeal to the more adventurous and those who enjoy the natural world.



NOBLE CALEDONIA

2 Chester Close, Belgravia, London, SW1X 7BE
+44 (0)20 7752 0000 | info@noble-caledonia.co.uk
www.noble-caledonia.co.uk



Our current booking conditions apply to all reservations and are available on request. Ports and itinerary are subject to change and weather conditions.

Cover image: Northern Lights