

SPECIAL  
OFFER - SAVE  
**£200**  
PER PERSON

# TIMELESS TREASURES OF THE NILE

A 14-night river voyage along the Nile between Aswan & Cairo  
aboard the 44-passenger SS Misr

2027 & 2028



NOBLE CALEDONIA

Join us aboard the SS Misr, a propeller steam vessel accommodating just 44 guests, and discover the many ancient wonders along the banks of the Nile on this 14-night journey between Aswan and Cairo. A cruise on a Nile steamer as a leisure pursuit was pioneered by British tourists in the late 19th century looking for a comfortable way to visit Egypt's fascinating sites and we are delighted to have chartered the lovingly restored SS Misr to offer our passengers the opportunity to discover the remarkable wonders of this ancient land in a high degree of comfort.

Our cruise along a 600 mile stretch of the Nile is a passage through antiquity, an incomparable river voyage which brings to life the great monuments of the pharaohs, the divine kings comprising thirty dynasties, who ruled Egypt during the 3000 years before Christ. We have devised our unique, two week itinerary to allow for the opportunity to visit some of Egypt's most famous sites in addition to discovering some of the lesser known archaeological sites and temples, and experience the wonders of the great civilisation that flourished in the Nile Valley. We will visit the private tombs at Beni Hassan, which, through superb wall paintings, provide a panorama of daily life in Egypt four thousand years ago from the leisure pursuits of the elite to workers in vineyards or children playing games. We also visit Abydos and Dendera temples and Tel El Amarna where you can survey the ruins of the temples and palaces of King Akhenaten and Queen Nefertiti. In addition to these less famous but historically important sites, we will of course explore some of the most renowned locations including the Great Pyramids, the Valley of the Kings and magnificent Karnak.

We will travel with excellent local guides and will be joined on board by a Guest Speaker who will add immeasurably to our knowledge of this ancient land. Cruising at a gentle speed, we will be able to drink in the rhythm of life on the banks of the river and from the spacious decks can observe the dramatic division between the fertile flood-plain and the arid majesty of the deserts flanking the river and witness traditional village life. Although the Egypt of the pharaohs came to an end almost two millennia ago, this cruise will leave you with a wealth of memories about its people, its monuments and its mysteries.



## Guest Speakers



### Tom Hardwick

Tom Hardwick is an Egyptologist and curator who has worked for museums in the United Kingdom, Egypt, and United States. His research focuses on ancient Egyptian material culture, particularly sculpture, and the history of collecting and dealing in Egyptian art in the 19th and 20th centuries. He writes for academic and popular journals, including *Apollo*, and recently worked on the renovation of Howard Carter's house in Luxor for the centenary of the discovery of the tomb of Tutankhamun.

**Tom Hardwick will be joining the 22 October 2027 departure.**



### Dr Anna Garnett

Dr Anna Garnett FSA has been the Curator of the Petrie Museum of Egyptian and Sudanese Archaeology, University College London, since 2017. She has worked at several local, national and university museums in the UK over the past two decades in a range of collections- and public-facing roles. She earned her PhD from the University of Liverpool in 2018 and has worked as a ceramicist and finds specialist in Egypt and Sudan for over 15 years. Her research interests include New Kingdom ceramics, the reconciliation of Egyptian and Sudanese object assemblages and archives, object distribution in the late-19th and early 20th centuries, and object- and archive-based teaching. Anna has lectured on Egyptological and Museological subjects for over 20 years and has published widely for both general and academic audiences. **Dr Anna Garnett will be joining the 5 November 2027 departure.**



### Professor Rosalie David OBE FRSA

Professor Rosalie David OBE FRSA is currently Emeritus Professor of Egyptology and Co-Director of the KNH Centre for Biomedical Egyptology at The University of Manchester. The focus of her career has been the establishment of a new university specialisation – biomedical research within the field of Egyptology – to provide a different approach to understanding the civilisation of ancient Egypt. Rosalie David has lectured at universities and presented papers at academic conferences in many countries; she first accompanied a Nile cruise as Guest Lecturer in 1974, and subsequently also fulfilled this role on Mediterranean and Red Sea cruises. She is the author of over 30 books and many articles in peer-reviewed journals

and has been consultant and contributor to several television documentaries. In the New Year Honours List 2003, she was awarded the Order of the British Empire for services to Egyptology and has received Fellowships of The Royal Society of Arts and The Royal Society of Medicine. She is a Vice-President of the Egypt Exploration Society. **Professor Rosalie David OBE FRSA will be joining the 11 February 2028 departure.**



### Dr Bill Manley

Dr Bill Manley is a best-selling author and expert on the Ancient Egyptian language, currently working with a major archaeological survey on the West Bank at Luxor. During three decades as a professional Egyptologist, he has taught both Egyptology and Coptic at the Universities of Glasgow, Liverpool and London; been Senior Curator for Ancient Egypt at National Museums Scotland; and worked and travelled extensively in Egypt. These days he is Co-director of Complutense Egyptology (a university-based research group in Madrid), Honorary President of Egyptology Scotland, and he teaches a popular programme of ancient-language courses at Bloomsbury Summer School in London. Bill's best-known book credits

include *How To Read Egyptian Hieroglyphs*, *Egyptian Hieroglyphs for Complete Beginners*, and *Egyptian Art* in the prestigious World of Art Series; he has also spoken at many international book festivals, including The Sunday Times Literary Festival. His latest book, *The Oldest Book in the World. Philosophy in the Age of the Pyramids*, was published by Thames & Hudson in June 2023.

**Dr Bill Manley will be joining the 20 October 2028 departure.**

The Nile



Abu Simbel



Trajan's Kiosk at the Philae Temple, Aswan



Queen Hatshepsut Temple

## The Itinerary – Northbound

**Day 1 London Heathrow to Aswan, Egypt.** Fly by scheduled flight to Aswan via Cairo. Upon arrival transfer to the SS Misr and embark.

**Day 2 Aswan.** This morning we will visit the High Dam at Aswan, considered an engineering miracle when it was built in the 1960s having had a huge impact on the economy and culture in Egypt. Today it provides electricity and irrigation for the whole of Egypt. We continue to the temple of Philae which is dedicated to the goddess Isis, wife of Osiris and mother of Horus. The story of Osiris is represented on the walls of the temple with two of its inner chambers that are rich in symbolic imagery. The temple was originally on Philae Island but due to high water levels was dismantled in 1977 and reconstructed on a nearby higher island called Agilkia. The main elements of the temple such as the two pylons, hypostyle halls and sanctuaries were built by the Ptolemaic kings. Later the Roman rulers added the colonnades in front of the temple as well as the ceremonial entrance to the island known as Trajan's Kiosk. We end our tour with a visit to the Nubian Museum, a complex of 50,000 square metres which is enclosed by walls to evoke the traditional Nubian village architecture. Return to the ship for lunch and a leisurely afternoon and this evening, enjoy a welcome cocktail party and dinner.

**Day 3 Aswan & Kom Ombo.** Enjoy a leisurely morning on board or alternatively take the optional excursion to the temples of Abu Simbel (by road approximately four hours each way) which is without a doubt the most impressive of all Nubian antiquities. Not only can we admire the outstanding sculptures, culture and reliefs which embellished the temples of Ramesses the Great and Queen Nefertari, cut out of the sandstone cliff around 3300 years ago, we can also applaud the achievement of archaeologists, architects and engineers in the 20th century AD who organised the rescue of the monuments to their new site above Lake Nasser. This afternoon we set sail for Kom Ombo, relax on deck and admire the Nile views.

**Day 4 Kom Ombo & Edfu.** This morning we visit the temple of Kom Ombo which was mainly built during the Ptolemaic dynasty and completed under the Roman Emperors. The temple is unique due to its 'double' design which meant that there were courts, halls, sanctuaries and rooms duplicated for the two gods that worshipped here. The southern half of the temple was dedicated to the crocodile god Sobek and the northern part of the temple was dedicated to the falcon god Haroeris. Among the carved reliefs along the inside of the outer wall are images thought to be connected with Egyptian medicine, including displays of birthing chairs and surgical instruments. We return to the ship and continue to sail to Edfu. After lunch on board we visit Edfu Temple, an ancient Egyptian temple which is set on



### Professor Aidan Dodson, FSA

Professor Aidan Dodson has taught Egyptology at the University of Bristol since 1996 and has been honorary Professor of Egyptology since 2018. He studied archaeology and Egyptology at the Universities of Durham, Liverpool and Cambridge, and was elected a Fellow of the Society of

Antiquaries of London in 2003. He was the visiting Simpson Professor of Egyptology at the American University in Cairo in 2013, and Chairman of the Egypt Exploration Society from 2011 to 2016. His particular research interests concern history and funerary monuments of ancient Egypt, and the history of Egyptology itself. As well as Egyptology, he researches and writes on naval history between 1850 and 1950 – like Egyptology, a passion since childhood. He has been accompanying tours to Egypt since the 1990s, and is the author of several hundred articles and book reviews, together with some thirty books. The latter include a series on the 'Lives and Afterlives' of a number of ancient Egyptian personalities, published by the American University in Cairo Press.

**Professor Aidan Dodson will be joining the 3 November 2028 departure.**



Queen Hatshepsut Temple relief

the West Bank of the Nile and said to be one of the best-preserved temples in Egypt. The temple is dedicated to the falcon god Horus and was built in the Ptolemaic period between 237 and 57 BC. This evening, we sail to Luxor where we moor overnight.

**Day 5 Luxor.** We will have the luxury of two full days to explore Luxor and today will be devoted to visiting the West Bank, one of the most famous and important archaeological sites in the world. See the Valley of the Kings, the burial ground of the pharaohs for a period of 500 years. The tombs vividly depict the journey of the sun god and pharaoh through the dangers of the underworld. In the temple of Queen Hatshepsut, we will discover scenes commemorating the reign of this exceptional monarch such as the ambitious voyage where she sent her ships to the Red Sea and the mysterious land of Punt. We stop at the Colossi of Memnon to witness the two imposing 18-metre-high quartzite seated statues which marked the entrance to the now vanished memorial temple of the Pharaoh Amenhotep III whose reign in the 14th century BC was one of the most opulent in Egyptian history. We will also visit Howard Carter House, the original home where the British archaeologist lived during his search for Tutankhamun's tomb which is now a museum featuring original artefacts from his time in Luxor.

**Day 6 Luxor.** Our second day in Luxor will be spent on the East Bank, where we will start with a visit to the magnificent temples of Karnak. Here you will witness the unbelievably vast array of monuments dedicated to Amun-Ra, king of the gods, his wife Mut and their son Khonsu. Just two of the highlights we will see are the great hypostyle hall with over 130 columns, some 22 metres high, and the obelisk of the powerful Queen Pharaoh Hatshepsut. Our tour will conclude with a visit to the Luxor Museum, an archaeological museum which was inaugurated in 1975. Whilst the range of artefacts on display is more restricted than the country's main collections in the Museum of Antiquities in Cairo, this was deliberate since the museum prides itself on the quality of the pieces it has. Return to the ship for lunch and this afternoon we visit Luxor Temple, situated on the east bank of the river Nile. Moor overnight in Luxor.

**Day 7 Dendera Temple.** Early this morning we sail to Qena and after breakfast our morning tour will be dedicated to the goddess Hathor as we visit the Dendera Temple, also known as the 'castle of the Sistrum'. Hathor was the goddess of love, joy and beauty. The Dendera Temple was associated with healing and patients who travelled there for cures could stay in special buildings so they could rest, sleep and commune with the gods in their dreams. Enjoy a leisurely afternoon sailing to Naga Hammadi where we will moor overnight.

**Day 8 Abydos Temple.** This morning we sail to El Balyana where we visit the temple that the Greeks called the Memnonium in Abydos, dedicated to Seti, Osiris, Isis, Ptah, Ptah-Sokar, Nefertem, Re-Horakhty, Amun and Horus. Its structure, built of white limestone, is one of the most impressive religious structures in Egypt. Return to the ship for lunch and enjoy the afternoon sailing north to Sohag where we will moor overnight.

**Day 9 Cruising.** Enjoy a day cruising along the Nile. Relax on deck and

enjoy the passing scenery and perhaps attend a lecture or two. We will moor overnight in Tel El Amarna.

**Day 10 Tuna El Gebel & Tel El Amarna.** This morning, we start by visiting Tuna El Gebel where the oldest monument is a boundary stela of Akhenaten and Nefertiti. The site is best known for its animal necropolis housing thousands of mummified baboons and Ibis sacred to Thoth. We then continue to Akhenaten's royal city, tomb and palace at Amarna. It is here we visit the tombs of Pentu, Ahmose, Meryre and the Royal tomb of Akhenaten. Return to the ship for lunch and enjoy the rest of the afternoon relaxing on board as we set sail to Minya.

**Day 11 Beni Hassan.** This morning we visit the Middle Kingdom tombs at Beni Hassan, an ancient Egyptian cemetery site. The necropolis of Beni Hassan reflects the political differences between the provincial rulers and the pharaoh kings. Due to the layout and more complex decorations, the tombs mark a transition stage in the style of the tombs from the Old Kingdom to the New Kingdom. Moor overnight in Minya.

**Day 12 Cruising.** Enjoy another relaxing day cruising along the Nile as we make our way towards Cairo. Perhaps spend time enjoying the passing scenery from the spacious decks, relax with a book and attend a lecture.

**Day 13 Meidum & Cairo.** We transfer this morning to the Meidum pyramid which is dedicated to the King Snefru of the 4th dynasty. Return to the SS Misr for lunch and enjoy the last few hours of sailing as we continue to Cairo where we will moor overnight.

**Day 14 Cairo.** Today is dedicated to the capital city of Cairo. We start the day by visiting the impressive Pyramids of Giza and the Sphinx, the only survivor of the Seven Wonders of the Ancient World and the tombs of the great Pharaohs and their queens. Enjoy lunch with a view of the Pyramids before we visit the Grand Egyptian Museum. This complex is a cultural hub and includes one of the largest museums in the world displaying the heritage of a single civilisation. The museum contains over 50,000 artefacts, reflecting Egypt's past from prehistory until the Greek and Roman periods including over 5000 artefacts from the tomb of the golden pharaoh Tutankhamun. This evening enjoy the farewell dinner on board.

**Day 15 Cairo to London Heathrow.** Disembark this morning and transfer to Cairo Airport for your return scheduled flight to London Heathrow.

### Southbound Itinerary – Cairo to Aswan

Please note that the itinerary shown is the northbound itinerary and this cruise also operates in the southbound direction from Cairo to Aswan as follows: Day 1 London Heathrow to Cairo, Day 2 Cairo, Day 3 Cruising, Day 4 Meidum & Minya, Day 5 Beni Hassan, Day 6 Tel El Amarna & Tuna El Gebel, Days 7 & 8 Cruising, Day 9 Abydos Temple, Day 10 Dendera Temple, Day 11 Luxor, Day 12 Luxor, Day 13 Edfu & Kom Ombo, Day 14 Aswan, Day 15 Aswan to London Heathrow. The full Southbound itinerary can be viewed online.



### 2027/2028 DEPARTURE DATES & PRICES PER PERSON

Based on double occupancy

#### SPECIAL OFFER – SAVE £200 PER PERSON FOR A LIMITED TIME ONLY

**Northbound Itinerary – Aswan to Cairo:** 22nd October to 5th November 2027; 11th to 25th February, 20th October to 3rd November 2028

**Southbound Itinerary – Cairo to Aswan:** 5th to 19th November 2027; 25th February to 10th March & 3rd to 17th November 2028

Cat	Cabin Description	2027		2028	
		Brochure Price	Special Offer Price	Brochure Price	Special Offer Price
4	Twin/Double cabin on Lower/Main Deck	£8395	£8195	£8795	£8595
3	Twin/Double cabin on Upper Deck	£8795	£8595	£9195	£8995
2	Suite on Main/Upper Deck	£10195	£9995	£10595	£10395
1	Panorama suite on Main Deck	£10595	£10395	£10995	£10795
4	Twin/Double cabin on Lower/Main Deck for sole use	£9795	£9595	£10195	£9995

**PRICE INCLUDES:** Economy class scheduled air travel • 14 nights aboard the SS Misr on a full board basis • Wine or beer & unlimited soft drinks with lunch & dinner • Shore excursions with local English speaking guides • Noble Caledonia Tour Manager • Guest Speaker • Gratuities • Transfers • Airport taxes.  
**Not Included:** Travel insurance, Egyptian visa, optional excursion to Abu Simbel.



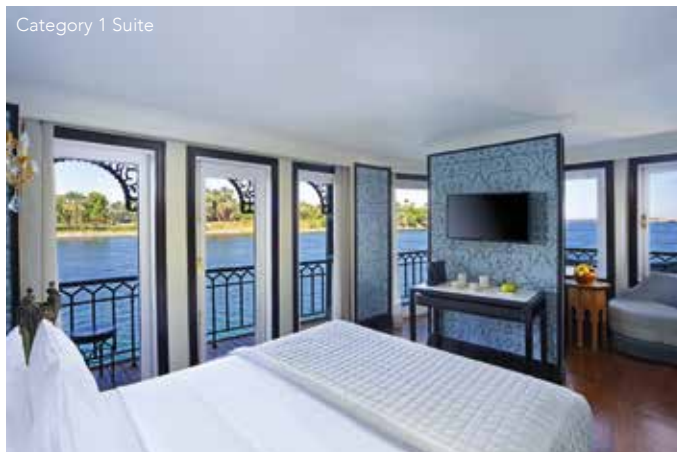
## SS MISR

For our journeys along the Nile, we are delighted to have once again chartered the recently refurbished SS Misr, a very special and unique vessel. Originally constructed in Preston by the Royal Navy in 1918, the SS Misr was purchased and later converted into a luxury Nile steamer for King Farouk. Now fully restored to a five-star deluxe propeller steam vessel she accommodates just 44 passengers in spacious, air-conditioned cabins and suites. Misr means ‘the Kingdom of Egypt’ and the décor throughout the vessel reflects the period.

### Your Cabin/Suite

Each cabin and suite has its own individual style and all feature a private balcony, air conditioning, en-suite bathroom with bath and overhead shower, hairdryer, mini-bar, robes and television. The suites on the Upper Deck are almost 50% larger in size than the standard cabins. The 14 category 3 and 4 twin/double cabins measure 21 square metres and feature a sweeping window that opens up to a private terrace with chairs so that guests can enjoy the spectacular view of the Nile at all times. The category 2 suites are approximately 30 square metres. Spacious and welcoming, these exquisitely appointed suites offer the perfect refuge to unwind after a day of adventure and sightseeing. Luxuriously designed, each suite

includes an elegant living area that contains a stylish loveseat and chairs, complemented by floor-to-ceiling windows that open to a private terrace so that guests can enjoy the spectacular view of the Nile. The category 1 panorama suites are approximately 35 square metres and are situated at the front of the vessel and offer impressive panoramic views. Unlike the other accommodations, these suites come with a private, furnished panoramic terrace that offers a spectacular 180-degree view of the Nile, so that guests can enjoy the inspiring view from every angle while cruising. This is the perfect spot to relax after a long day with a drink or book, or to watch the leisurely sail along the Nile to the next destination.





**Your Dining**

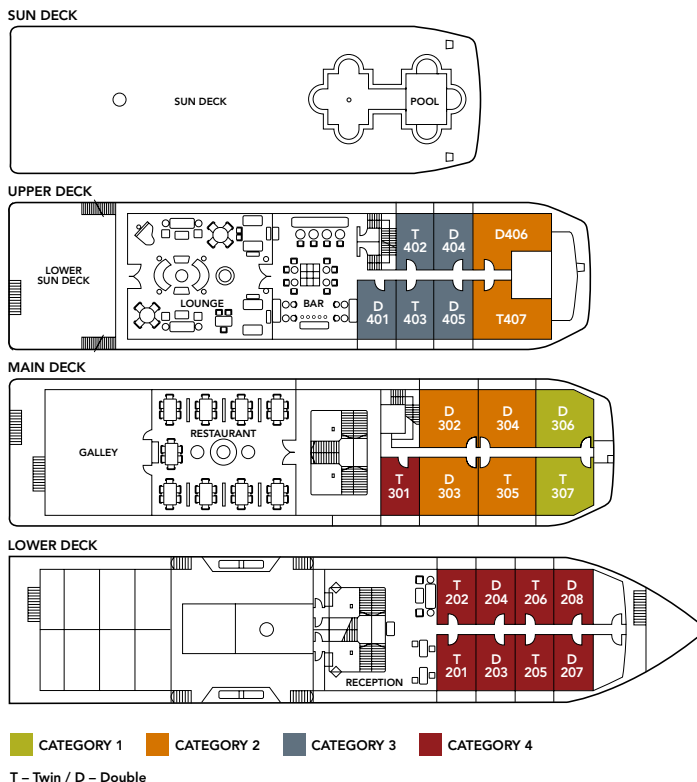
The Marasem Restaurant, situated on the main deck serves international cuisine and seats all passengers in one open seating arrangement. Breakfast, lunch and dinner are mainly served buffet style with a few à la carte set menus offered throughout the cruise. Tables seat six to eight people. Tea and coffee are served on a complimentary basis after all meals and there are tea and coffee amenities in the cabins. A complimentary bottle of water is provided in your cabin and replenished daily.

**Your Space**

The SS Misr is both elegantly furnished and spacious throughout. The Saraya Lounge and Dahabia Bar are located on the higher decks offering wonderful views of the Nile. There is also a lower Sun Deck with comfortable seating and an upper Sun Deck with a pool and sun loungers for relaxation. The onboard attentive staff are always available to offer a cool beverage whilst watching the ever changing passing scenery. The ship also has an onboard souvenir and gift shop selling jewellery and local handmade gifts.



**DECK PLAN**



**NOBLE CALEDONIA**

2 Chester Close, Belgravia, London, SW1X 7BE  
+44 (0)20 7752 0000 | info@noble-caledonia.co.uk  
www.noble-caledonia.co.uk



All special offers are subject to availability. Our current booking conditions apply to all reservations and are available on request.  
Cover image: Pyramids and the Sphinx, Giza.