

SPECIAL
OFFER - SAVE
£300
PER PERSON

PEARLS OF POLYNESIA

ISLAND HOPPING IN FRENCH POLYNESIA
ABOARD THE MS ISLAND SKY

18TH OCTOBER TO 1ST NOVEMBER 2026

NOBLE CALEDONIA

Join us aboard the MS Island Sky and discover the idyllic islands of French Polynesia as we uncover their history and legends and visit some of the most captivating islands in the world. The beauty of the islands exceeds everyone's expectations. They are as sensuous as the paintings of Gauguin, more adventurous than the tales of Robert Louis Stevenson and more romantic than James Michener's fabled Bali Hai.

The name Polynesia means 'many islands' and no one could argue with the suitability of this title. There are islands of low lying coral with some of the most stunning beaches in the world and contrasting volcanic mountainous landscapes of lush, incomparable beauty. Welcoming others is sacred to Polynesians and that will be evident as we island hop through the region experiencing the genuine warmth of the people as we learn more about their fascinating culture and heritage. Visiting the villages and meeting the locals who have preserved many of their traditional customs and values is a truly memorable experience.

Our island hopping expedition begins and concludes in Tahiti, the iconic island of the Pacific dream. Envision if you will the evocative paintings of Paul Gauguin, a Paris stockbroker who ditched it all to pursue his art in Tahiti. Gauguin's images of exuberant outdoor settings with vivid lagoons and statuesque palms will become the backdrop of your first days in paradise. We will also discover the volcanic Marquesas Islands and the beauty of the Tuamotu Islands which constitute the largest chain of coral atolls in the world. Our days will spent on nature walks, searching for endemic birds such as the Tuamotu sandpiper, beachcombing, snorkelling or swimming from the pristine beaches, interacting with the locals and learning about their way of life and traditional handicrafts or, simply experiencing some of the most pristine tropical scenery to be found anywhere in the world.

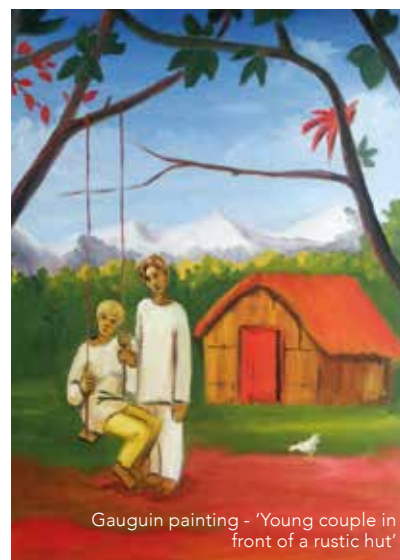
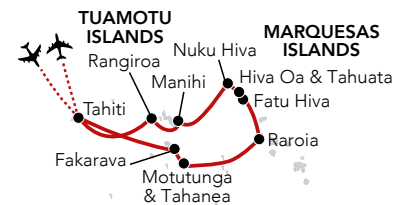
An expedition such as this requires a vessel akin to the MS Island Sky with the ability to adapt to her surroundings and land on remote atolls using the fleet of Zodiac landing craft whilst providing a comfortable base. We will explore inlets, lagoons and land in otherwise inaccessible places and although we set sail with a set itinerary, it is often the unscheduled events that become the highlight. We will be joined on board by an expert expedition team, consisting of naturalists and marine biologists who will share their knowledge and enthusiasm during forays ashore and whilst on board.

WHAT TO EXPECT...

Flexibility is the key to an expedition cruise; sometimes the whole day's schedule will be changed to maximise your experience, something that would not be possible on a large cruise ship. Each day holds something new and below is an extract from the ship's log from a previous expedition which will provide you with an idea of what to expect.

Raroia: After an early lunch we arrived just outside the atoll of Raroia, the largest atoll we have visited so far with more than 300 motu and the lagoon stretching as far as the eye could see. The ship anchored just outside the lagoon and the expedition team commenced operations to and from the main village, which was picture perfect with calm, pale turquoise water, lapping at the shore of a palm fringed white coral beach. After a traditional musical welcome, we made our way over to a shaded area, where the villagers were displaying local handicrafts and pearl jewellery for sale. With the rest of the afternoon at leisure we dispersed in different directions to either swim in the lagoon off another beautiful beach approximately 500 metres from the village or take a Zodiac transfer to an area just inside the shelter of the lagoon where snorkelling platforms had been set up by the expedition team. In the shallow water there were beautiful corals with all sorts of marine life including butterfly, angel, parrot and a variety of damsel fish species as well as moorish idols, chromis and little cleaner wrasse. It was a fantastic snorkelling experience in the sheltered waters of the lagoon.

Motutunga & Tahanea: Captain anchored the ship just outside the entrance to the atoll and a large Zodiac platform was established nearby. We were shuttled to the Zodiac platform and could explore the reef at our leisure. The corals were beautiful and we once again enjoyed just drifting and watching this incredible underwater world. For those more adventurous snorkellers the expedition team offered the chance to experience an accompanied 'drift snorkel' through the mouth of the lagoon. In the afternoon we sailed on to Tahanea where there was an afternoon birding expedition with the ornithologists in the expedition team. They had a very specific mission in mind and set off across the lagoon to a distant motu in search of the endemic and exceptionally rare Tuamotu sandpiper.



Gauguin painting - 'Young couple in front of a rustic hut'





Tiki, Nuku Hiva



Stingray



Traditional dancer, Fatu Hiva



Church, Nuku Hiva

The Itinerary

Day 1 London to Tahiti, French Polynesia. Fly by scheduled flight via Los Angeles.

Day 2 Tahiti. Arrive this morning and transfer directly to the MS Island Sky which will be moored in Papeete. Sail later today.

Day 3 Rangiroa, Tuamotu Islands. As one of the world's largest coral atolls, Rangiroa, whose name translates into "vast sky", has a magnificent lagoon surrounded by small islets or motus, stretching as far as the eye can see. Arriving in the mid-morning we will have time to enjoy our first snorkel or swim, join our birder for a nature walk, visit the island's black pearl farms or wander through the enchanting local village of Avatoru.

Day 4 Manihi. Spend the morning at the idyllic atoll of Manihi. It was here, in the inner lagoon, that black pearls were first farmed in Tahiti and we have the chance to visit a farm to learn about the growing process. Alternatively enjoy a swim in the clear waters, snorkel over the coral reefs where we may see manta rays and tropical fish or meet the islanders and shop for local crafts in the colourful village of Turipaoa. Return to the ship for lunch and an afternoon at sea.

Day 5 At Sea. Enjoy a day relaxing on the sun deck and join a lecture in the lounge as we sail north.

Day 6 Nuku Hiva, Marquesas Islands. Arrive in the Marquesas Islands, far removed from the rest of the South Pacific in everything from language and culture to geology. Nuka Hiva is the largest of the islands and the island group's economic capital. Here, we will immerse ourselves in local culture and geography. Traditional Marquesan dancers will welcome us to their village and we will visit the archaeological centres at Kamuihei and Hikoku'a and see the temples, petroglyphs and tiki. Meanwhile a series of island walks will focus on the flora and fauna of the island whilst there will also be an opportunity to swim from the beaches.

Day 7 Hiva Oa & Tahuata. This morning will be dedicated to Gauguin, iconic artist of the South Pacific. We will visit the museum which offers a permanent exhibition of his works and make a pilgrimage to his final resting place in the cemetery perched high on a hill overlooking the town. We will soak up the landscape that inspired him to leave it all behind and go native. Over lunch we will sail to the neighbouring island of Tahuata, the smallest inhabited island of the Marquesas which was the first to be visited by Protestant and Catholic missionaries and where the first church

in the Marquesas was built. With no airport the island is only accessible by sea and is off the usual tourist trail. We will land this afternoon and explore Hapatonu village, meet the local population and learn about their history and ways of life.

Day 8 Fatu Hiva. With a landscape of spectacular pinnacles towering over the cobalt Bay of Virgins, Fatu Hiva is one of the most floral and pristine islands. Villagers will perform their traditional dances and demonstrate their handicrafts of wood carvings and tapa making. Afterwards, weather depending, our expedition team will run a series of nature walks either climbing to the viewpoint, searching for birds with our ornithologist or a nature walk to the waterfall. Meanwhile a snorkel platform will be set up for those who wish to swim.

Day 9 At Sea. Spend a day at sea. Maybe join a lecture or find a spot on deck to relax or watch for wildlife.

Day 10 Raroia, Tuamotus. Raroia is known for its pearl farming and we will see the strings of oysters all around the local farms. After the traditional welcome to the island including a selection of local fruits and fish, we will have the day to explore on a variety of walks, swim from the beach or snorkel in the beautiful coral garden with parrotfish, angelfish and butterfly fish.

Day 11 Motutunga & Tahanea. Motutunga Atoll was first sighted by James Cook in 1773 who named it 'Adventure' after his own ship. Both Motutunga and Tahanea are uninhabited atolls and offer some of the finest snorkelling in the Tuamotu archipelago. We will be able to see amazing corals and marine life including triggerfish and surgeonfish. At Tahanea there will be another chance to snorkel or alternatively join our birders on a walk to find the endemic Tuamotu sandpiper or our naturalists as we beachcomb.

Day 12 Fakarava. Spend the day in this protected atoll which, along with its six neighbouring islands, make up a UNESCO classified nature reserve. It has been the home to Robert Louis Stephenson in 1888 and Henri Matisse in 1930 whose art was influenced by the landscape for many years. The local villagers of Rotoava will welcome us and demonstrate their handicrafts and cultural traditions. There will be the chance to sample local delicacies, explore independently, join our naturalists for walks or maybe take the opportunity for a last swim in the clear Polynesian waters.



Rangiroa



Fakarava



Exploring by Zodiac



Tuamotu sandpiper

Brown booby



EXPLORING ASHORE

During this expedition, the vessel will be at anchorage each day and the Zodiacs will be used to transport passengers ashore and to explore remote inlets. Landings will be on to beaches, so will be wet landings in warm water. Visits to specific islands are weather dependent. Ashore, our onboard team will endeavour to arrange a selection of walks to include longer and shorter options to cater for different abilities and interests. There will be opportunities to swim and snorkel and some snorkelling opportunities will be from a snorkelling platform and only suitable for the more confident swimmers. Transport on the islands is very limited and when used will be small minivans, trucks and taxis.

PRICES PER PERSON

Based on double occupancy

SPECIAL OFFER – SAVE £300 PER PERSON FOR A LIMITED TIME ONLY

Deck	Suite Category	Brochure Price	Special Offer Price
Magellan	Standard	£9795	£9495
Columbus	Superior	£10095	£9795
Marco Polo	Premium	£10995	£10695
Marco Polo	Corner	£11295	£10995
Erikson	Deluxe Balcony	£11795	£11495
Explorer	Owner's Balcony Suites	£12295	£11995
Explorer	Island Suite	£12995	£12695
Magellan	Standard for sole use	£10995	£10695
Columbus	Superior for sole use	£11495	£11195

PRICE INCLUDES: Economy class scheduled air travel • 11 nights aboard the MS Island Sky on a full board basis • House wine, beer and soft drinks with lunch and dinner • Noble Caledonia expedition team • Shore excursions • Gratuities • Transfers • Airport taxes • Port taxes.
Not Included: Travel insurance, US ESTA (required for transiting en-route to Tahiti).
FLIGHTS: Please note that flight schedules are yet to be released at the time of promotion. If you would like to break your journeys to and from Tahiti with a stay in Los Angeles, please register your interest at the time of booking. Details will be confirmed approximately 10 months prior to departure. For flights which transit via the USA, passengers will be required to apply for an ESTA.

MS ISLAND SKY



Friendly Service



Deluxe Balcony Suite



The Restaurant

The much loved MS Island Sky is one of our two flagships and sister vessel to the MS Hebridean Sky. Both vessels were built in the same shipyard in Italy at similar times and share the same excellent attributes that make them two of the finest small ships in the world. With a maximum passenger capacity of only 118, a vessel of her size is capable of carrying many more but instead the MS Island Sky has the benefit of unusually large suites, luxuriously appointed public areas and spacious outside decks.

Your Suite

On board there are 59 exceptionally spacious and well-designed suites. All feature a seating area and some have private balconies, whilst those on the Marco Polo Deck feature tinted, sliding glass doors allowing greatly enhanced viewing opportunities and quick access to the deck. The feeling of luxury is enhanced by the wood panelling and brass, which predominates throughout the vessel conveying the atmosphere of a private yacht. The passenger accommodation is arranged over five decks and each suite affords considerable comfort with en-suite bathroom featuring marble-topped vanity unit with sink and walk-in shower, a large wardrobe, dressing table and excellent storage. There is a mini-fridge, flat screen television with inbuilt DVD/CD player and a telephone in each suite. Refillable water bottles, dressing gowns and slippers are also provided for your comfort. Other facilities include a safe, hairdryer, assorted Noble Isle toiletries, air-conditioning and heating. The comfortable beds in each suite can be configured as either double or twin.

Your Dining

With only one sitting and a maximum of just over 100 passengers, the cuisine on board the MS Island Sky is of a consistent superior quality that befits such a vessel. In keeping with the informal atmosphere on board, when dining you are able to choose your seating arrangements and choice of restaurants at your leisure; whether that be joining a table of four to six other passengers in the elegant à la carte Restaurant or outside buffet-style on the Lido Deck in the evening sunshine. In the main Restaurant, breakfast is served buffet-style, with certain items cooked to order on request. Lunch and dinner menus offer plenty of choice, often reflecting the daily catch and local delicacies. The Welcome and Farewell dinners are a sumptuous five course affair. To enhance your dining experience further a selection of wines is included with both meals. Afternoon tea and pre-dinner canapés take place in either the comfort of the Lounge or out on the Lido Deck when the weather is favourable. Tea and coffee are also available 24 hours a day. Special diets can be catered for with sufficient notice.



Superior Suite



The Club



The Library

Your Space

The spacious and finely decorated public rooms include a large Lounge on the Columbus Deck featuring a selection of seating options from individual armchairs and sofas to side cushioned benches. Daily briefings given by the Cruise Director and talks from Guest Speakers and expedition staff take place in the Lounge. In addition to the main Lounge, there is also The Club, located on the Marco Polo Deck which features the main bar. The Club also features a 24-hour tea and coffee station. Towards the aft of the ship on the Columbus Deck is the Library. Well stocked with reference books pertaining to the destinations the vessel is visiting and a selection of essential reads, you will not find yourself short of excellent literature on board. A collection of games as well as devices to access the internet via the ship's satellite can also be found in the Library. Access to the ship's satellite Wi-Fi via your own device is complimentary on board (*signal strength varies depending on location and demand*). The main Restaurant, which can seat all guests at one sitting, is located on the Magellan Deck, and outside there is a rear Lido Deck located on the Erikson Deck where meals are served in warm weather under shade. Further to this on the top Explorer Deck there is an observation area ideal for spotting wildlife, complete with sun loungers for sunbathing, relaxing with a book or catching up with fellow travellers. The Promenade Deck wraps around the whole ship giving outstanding views. There is also a small beauty salon on board with appointments made on request.

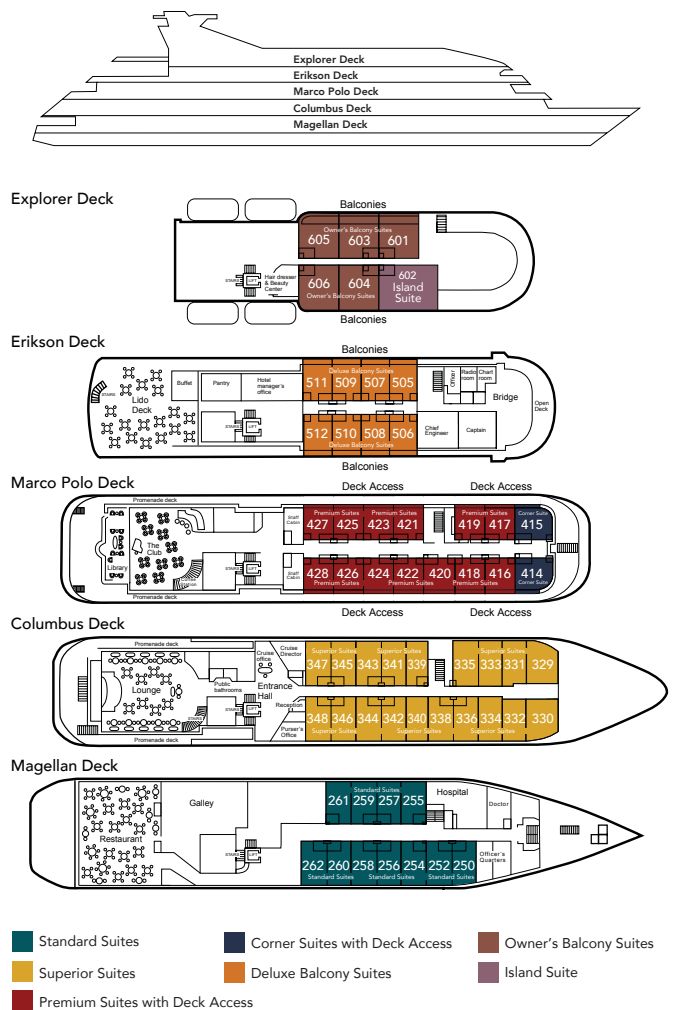
Your Comfort

The MS Island Sky is equipped with the latest safety, navigation and communications equipment along with roll stabilisers to minimise the ship's motion. During your voyage we hope to offer you the opportunity to visit the Captain and Officers on the Bridge to check the vessel's progress by charts and learn more about your journey. On board you will also find a clinic and Doctor and a lift that serves all decks. When at anchor our nimble Zodiacs will ferry you ashore or, on select cruises, enjoy Zodiac cruises getting you closer to the natural world.

Your Life On Board

The atmosphere on board is warm and convivial and more akin to a private yacht or country hotel in which you can learn more about wonderful destinations you are visiting in the company of like-minded people. There is a high ratio of crew to passengers and our friendly crew of 75 are mainly Filipino and Eastern European and our Captains are experienced mariners. After a day ashore you will return to the comfort and peace of a well-run and exceedingly comfortable ship where peace, high quality of service and attention to detail are the order of the day. A little music in the Lounge after dinner, Guest Speakers and informative port briefings and of course good food, all contribute to make any voyage aboard this wonderful vessel a memorable and joyful experience.

MS ISLAND SKY DECK PLAN



During this voyage you will be visiting out of the way destinations and will be accompanied by an expedition team. Landings and excursions will be made by Zodiac landing craft. This cruise will appeal to the more adventurous and those who enjoy the natural world.



NOBLE CALEDONIA

2 Chester Close, Belgravia, London, SW1X 7BE
+44 (0)20 7752 0000 | info@noble-caledonia.co.uk
www.noble-caledonia.co.uk

