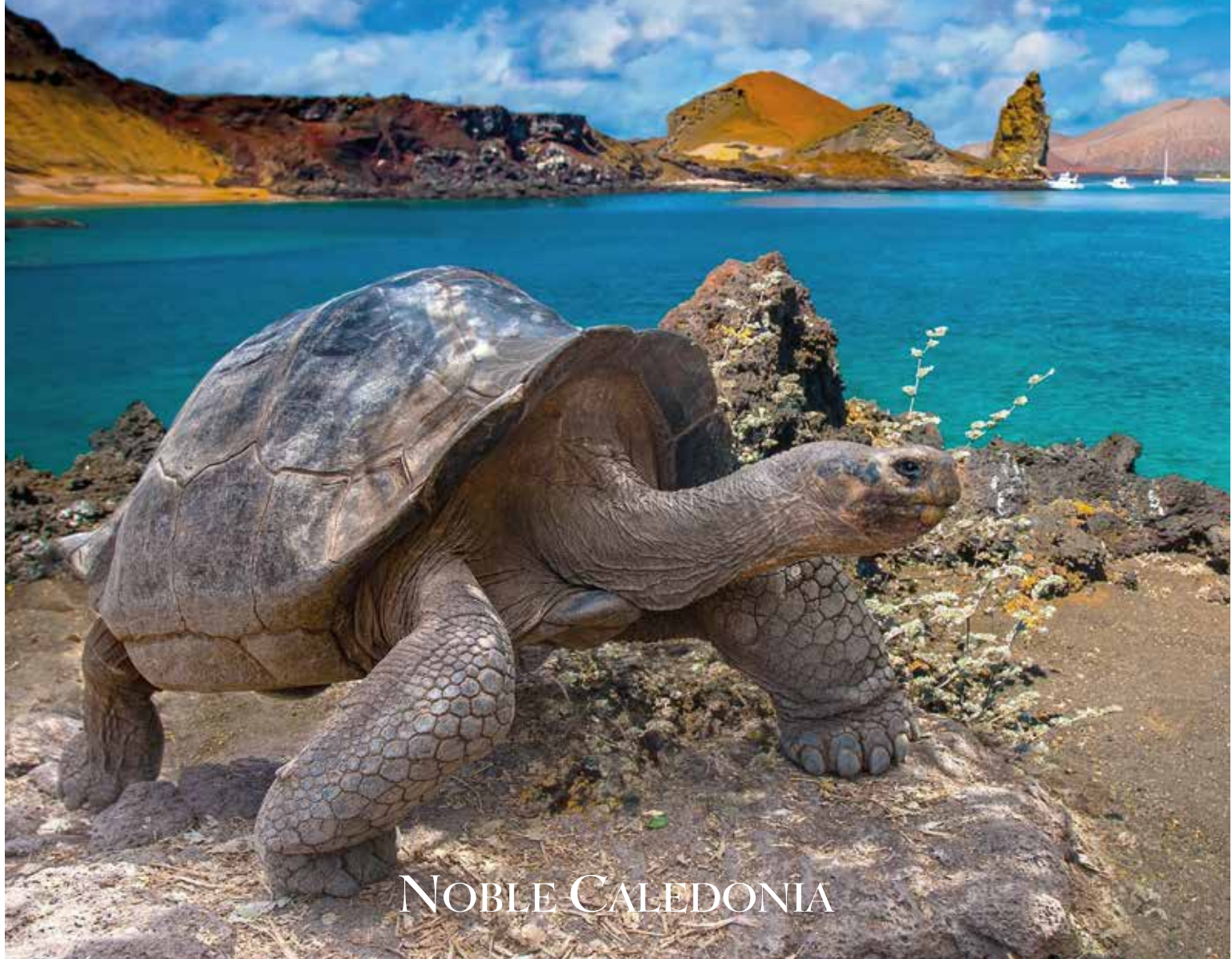


EXCLUSIVE NOBLE CALEDONIA CHARTER FOR JUST 36 PASSENGERS

NATURAL WONDERS OF THE AMAZON & GALAPAGOS

An extraordinary river cruise through the Ecuadorian
Amazonia aboard the MV Anakonda combined with
an island hopping cruise through the Galapagos
aboard the Isabella II

23rd February to 8th March &
2nd to 15th November 2025



NOBLE CALEDONIA



Join us for this unparalleled journey and discover the wonders of the natural world as we explore the Napo River in Amazonia and the Galapagos Islands aboard two very special vessels, the MV Anakonda and Isabela II, which we have chartered for this unique combination.

We will begin in Ecuador's capital, Quito, a city stretched narrowly between volcanic peaks, and a fittingly dramatic introduction to this compact but diverse country with its beautifully restored colonial architecture and busy plazas. We then fly to Coca and begin our discovery of the Yasuni, the largest of Ecuador's continental National Parks; a wild and untamed realm in the heart of the Ecuadorian Amazon. The Amazonian rainforest is one of the most bio-diverse regions on our planet and is home to thousands of indigenous peoples, who have lived there for millennia. We will venture into remote and pristine areas of the rainforest where we can observe the wilderness, diverse wildlife and interact with the region's indigenous communities. Excursions with our naturalist guides will provide an opportunity to view jungle wildlife including playful monkeys, pink dolphins, colourful tropical birds and river turtles, anacondas, caimans and other amphibians and reptiles of this unique eco-system.

Following on from our time exploring the Amazon we return to Quito for an overnight stay before continuing with the second half of our expedition, our island hopping cruise through the pristine Galapagos Archipelago aboard the Isabela II. The archipelago's 13 major islands, six smaller ones, and scores of islets are all part of Ecuador's National Park system. In 1835 Charles Darwin visited the islands and discovered this "living laboratory" which inspired his writings on the Theory of Evolution. Many of the animals on the Galapagos Islands have developed into different species from their continental relatives, and because they have never experienced man as a predator, they show no fear of humans. The moment you set foot on your first island you will see that curiosity and fearlessness are a way of life. Whether strolling along the islands' pristine beaches, searching for rare and intriguing wildlife, having a "chat" with a particularly friendly sea lion, or snorkelling with Galapagos penguins, a feeling of freedom surrounds you.

EXPEDITION HIGHLIGHTS

- Admire Quito's beautifully restored colonial architecture
- Explore Yasuní National Park in the heart of the Ecuadorian Rainforest
- Visit a remote jungle community on the banks of the Napo River
- Witness the diverse and fascinating wildlife of Ecuador's pristine Amazonia
- Cruise the Galapagos Islands, each with its own unique flora & fauna
- Observe wildlife by snorkelling or by glass-bottomed boat in the Galapagos
- Interact with expert Naturalist Guides whilst discovering both the Amazon & Galapagos
- Boutique vessels and touring with up to just 36 fellow guests





Spider Monkey



Red Ginger



Exploring the Amazon by canoe



Scarlet Macaw, Napo River



Yasuni National Park

THE ITINERARY

Day 1 London or Manchester to Quito, Ecuador. Fly by scheduled indirect flight to Quito early this morning. On arrival transfer to our hotel for a three night stay.

Day 2 Quito. After breakfast at the hotel we depart for a tour of Quito's colonial quarter, the largest and best preserved in South America and a UNESCO World Heritage Site. We will stroll across Independence Plaza, flanked by the Cathedral, the Presidential Palace, the Municipal Building and the Archbishop's Palace and visit the temple of La Compania de Jesus with its wonderful, gilded interior. Also visit the Monastery of San Francisco, one of the great religious buildings of the New World with its impressive façade and atrium, and its Baroque interior influenced by Moorish style. After lunch in a local restaurant the remainder of the afternoon and evening is free to explore further at your own pace. (B, L)

Day 3 Quito. This morning we drive to the Equatorial Monument, 16 miles north of Quito, which marks the exact Middle of the World, latitude 0°, where we can stand with a foot on each hemisphere. Return to the hotel for a free afternoon before we meet this evening for dinner in the hotel. (B, D)

Day 4 Quito to Coca. After breakfast at the hotel, transfer to the airport for our flight to Coca. On arrival we will transfer to the dock where we will embark on a motorised canoe and navigate down river (approximately 90 minutes) to board the MV Anakonda. Throughout the journey we have a chance to admire the rainforest landscape and banks of the great Napo River. After boarding the MV Anakonda we will cast off and continue navigating downstream. After dinner, you may wish to join a guided night walk allowing for the opportunity to discover the forest's nocturnal activity and listen to the incessant sounds of nature. (B, L, D)

Day 5 Yasuni National Park. After breakfast, we will travel by motorised canoe and spend some time exploring one of the large islands where we hope to see eagles, oropendolas, woodpeckers, and many other birds. After lunch, we visit Yasuni National Park, a pristine and relatively undisturbed region of the Ecuadorian Amazon. This area is home to the legendary pink river dolphin, anacondas, river turtles and various primate species, as well as the colourful hoatzin, a unique bird that is known locally as the 'stinky turkey'. (B, L, D)

Day 6 Meeting the Community. This morning we visit a Kichwa family who live on the banks of the Napo River where we will have the opportunity to interact with the local community and learn about life in the remote jungle. We return to the MV Anakonda for lunch and some time to relax while we navigate upstream. Enjoy a cultural cooking demonstration and share recipes and techniques to prepare exquisite traditional Ecuadorian food. After lunch there will be an opportunity to enjoy a lecture or learn about (and make) typical handicrafts of the area. For those feeling active there will be an opportunity to go kayaking. (B, L, D)

Day 7 Observation Tower & Forest Adventure. This morning we disembark to visit an observation tower in the rainforest canopy which offers astonishing 360-degree vistas. From the top of the tower, we will benefit from this unique perspective of the forest, the treetops and the greatness of the Amazon Basin. In the afternoon, we will explore the nearby forest by foot and discover a myriad of different animals and plant species that can only be found in the Amazon basin. (B, L, D)

Day 8 Coca to Quito. Disembark the MV Anakonda this morning and transfer by motorised canoe to Coca (approximately 90 minutes). On arrival transfer to the airport for the flight to Quito and enjoy dinner and an overnight stay at our hotel. (B, D)

Day 9 Quito to Galapagos. After breakfast at the hotel, transfer to the airport for the flight to Baltra in the Galapagos. On arrival, we will transfer by ferry to Santa Cruz Island. A 30 minute bus ride takes us up to the Highlands where we learn about its unique ecosystems and biodiversity. After lunch in a local restaurant, we drive to a nearby reserve to see giant tortoises in their natural habitat. There are also several lava tunnels to explore in the reserve. Later we continue to Puerto Ayora to embark the Isabela II. This evening enjoy welcome drinks and dinner on board. (B, L, D)

Day 10 Santiago Island & Chinese Hat Islet. Our first call today is on Santiago Island. Following a wet landing on the black, sandy beach, our trail takes us to enjoy close-up encounters with recently reintroduced land iguanas, plus land and marine birds amid a landscape of tuff-stone layers, craggy rocks, and lava flows. At low tide, marine iguanas graze upon the algae beds and we can also observe a colony of fur seals, usually dozing in the shade of some rocks. This afternoon we head to Chinese Hat Islet.



This islet, formed only fairly recently, makes a beautiful afternoon visit as we explore the wildlife along its 1,312 foot (400 metre) long trail, which begins at a crescent-shaped, white sandy beach. The cove offers excellent swimming and snorkelling opportunities amid white-tipped reef sharks and Galapagos penguins. (B, L, D)

Day 11 Genovesa Island. The day starts with a panga ride along the cliffs of "Bird Island", as Genovesa is affectionately nicknamed, followed by a landing at a steep staircase which connects us with a flat plateau. From here the trail winds its way through large colonies of Nazca boobies, red-footed boobies, great frigatebirds, and storm petrels. With luck, we will be able to spot the short-eared owl. Those who do not wish to disembark can enjoy a longer panga (inflatable dinghy) ride along the cliffs, weather conditions permitting. After lunch we land at the beautiful white beach of Darwin Bay. Here we walk amid hundreds of birds, most of which are frigatebirds, red-footed and Nazca boobies, as well as gulls, herons, finches, and mockingbirds. (B, L, D)

Day 12 Santa Fe Island & South Plaza Island. This morning we take the dinghy over to this idyllic sandy-white beach populated by colonies of sea lions. Galapagos hawks are often easily observed, perched atop salt bushes. The Santa Fe land iguana may be spotted during our exploration. Following the walk, we can snorkel and swim along a natural wave barrier or ride the glass-bottom boat. After lunch we explore South Plaza where the turquoise waters contrast brilliantly with the white sand and black lava of the shoreline. Beyond, a carpet of scarlet sesuvium succulents serves as a groundcover for a grove of luminescent green prickly-pear cactus. Yellow-grey land iguanas sit beneath these, waiting patiently for pears to drop. Along the coastline we find sea lion colonies, while frigates, swallow-tailed gulls, and shearwaters glide, playing with the thermals. This evening enjoy the farewell dinner on board as we sail back towards Baltra. (B, L, D)

Day 13 Baltra to London or Manchester. Disembark after breakfast and transfer to the airport for your return scheduled indirect flight to London. (B)

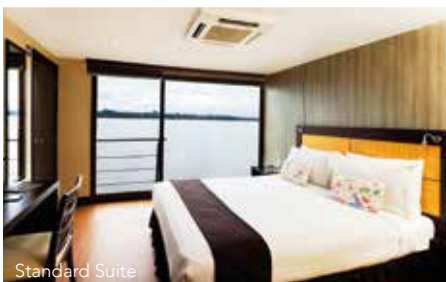
Day 14 London. Arrive into London today.

Please note: To best enjoy your experience during this tour, you should be in good physical condition. There are activities each day including daily use of canoes or Zodiacs undertaken in humid conditions in addition to the high altitude in Quito. If you would like to discuss the required fitness level, please contact our reservations team.

PRICES PER PERSON
Based on double occupancy

Cabin Category	Price
Anakonda Standard Cabin/Isabela II Classic Cabin	£9295
Anakonda Deluxe Cabin/Isabela II Classic Cabin	£9795
Anakonda Deluxe Cabin/Isabela II Master Cabin	£10295
Anakonda Standard Cabin/Isabela II Standard Cabin for sole use	£11295
Anakonda Standard Cabin/Isabela II Classic Cabin for sole use	£13095

PRICE INCLUDES: Economy class scheduled air travel • Four nights hotel accommodation in Quito • Four nights aboard the MV Anakonda on a full board basis • Four nights aboard the Isabela II on a full board basis • Meals as indicated (B – Breakfast, L – Lunch, D – Dinner) • Shore excursions • Naturalist guides • National Park and Community fees • Gratuities • Tour Manager • Transfers • Port taxes • Airport taxes.
Not Included: Travel insurance.



Standard Suite



Restaurant



Sun Deck

MV ANAKONDA

The luxurious MV Anakonda is a 148 foot-long floating boutique hotel accommodating just 36 guests. The vessel's wall-to-wall panoramic windows will allow you to observe the wilderness from almost every point in the vessel. The friendly on board crew of 20 will provide you with excellent service and do much to contribute to your enjoyment throughout your journey. The crew includes a purser, paramedic, four expert English speaking naturalist guides, four local guides and a concierge. In addition you will be accompanied by a Noble Caledonia Tour Manager. There will be a range of onboard activities including briefings and talks from the naturalists and cooking demonstrations. The atmosphere on board is relaxed and informal with an informal dress code to match.

Your Cabin

The MV Anakonda offers 18 air-conditioned suites, which all have outside facing views. The four Deluxe Suites measure 24 m² and feature a fully accessible balcony and en-suite bathroom with shower and Jacuzzi bath. The fourteen Standard Suites measure 20 m² and have a French balcony and en-suite bathroom with shower only. All beds are either a fixed twin or fixed double configuration. The suites are fully equipped with modern conveniences including hairdryer and toiletries.

Your Space

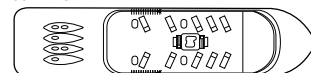
The Sun Deck with its alfresco lounge and two outdoor Jacuzzis is an ideal place for enjoying a cocktail, relaxing with a good book or simply taking in the spectacular views. There are many public spaces on board including a bar/lounge, indoor dining room, and al fresco dining area and small boutique.

Your Dining

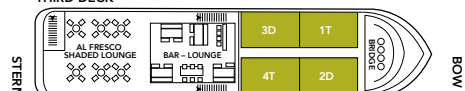
On board you will enjoy a wide variety of national and international fusion cuisine. The chefs utilise traditional and well-known cuisine from all over the world and adapt it using fresh, local products. Individual tastes can be catered for, and guests can enjoy unique fare such as fish prepared in fresh coconut sauce.

DECK PLAN

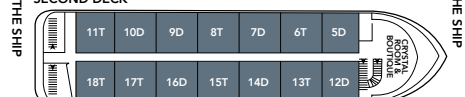
SUN DECK



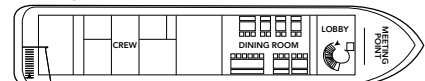
THIRD DECK



SECOND DECK

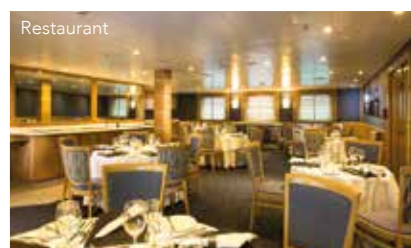


MAIN DECK



Please note that "T" indicates which cabins have a fixed twin bed and "D" indicates which cabins have a fixed double bed.

DELUXE STANDARD



ISABELA II

The Isabela II is a stylish yacht ideal for exploring the Galapagos Islands. She accommodates just 40 guests in comfort, and is equipped with Zodiacs for landing on these remote islands. The ship is also equipped with sea kayaks, a glass-bottom boat and snorkelling equipment for making the most of your journey around this breathtaking archipelago. On board you will be accompanied by a team of passionate and dedicated naturalist guides who will add greatly to your overall experience.

Your Cabin

Carrying a maximum of only 40 guests, all 21 cabins aboard the Isabela II are en-suite and have outside views with ample storage space, a safety box and a hairdryer. Divided between two decks, there are 20 cabins on the Cabin Deck whilst the master cabin is located on the Main Deck next to the dining room. There are 16 Classic Cabins measuring 12.8m² and these have twin beds, Standard Cabins measure 12m² and have double beds. The Master Cabin on the Main Deck is larger and measures 18.9m² and has a double bed, with an additional sitting area.

Your Space

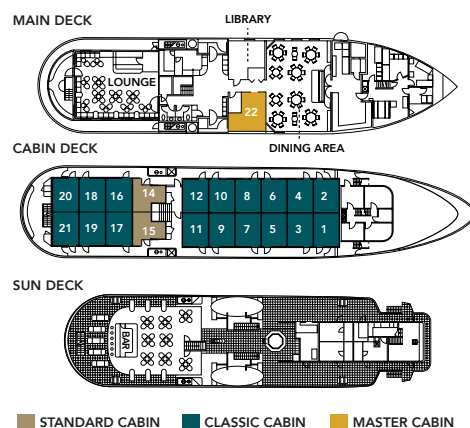
The Lounge is where daily briefings and films on the natural world will be shown throughout your voyage. Here you will find a well-stocked bar where you can enjoy a drink in the evenings, or perhaps relax with a good book and a cup of tea

from the coffee and tea station which is available 24 hours a day. In the reception area you will find the small gift shop and internet point although quality of reception will depend on location. The Sun Deck with comfortable furniture offers breathtaking views of your surroundings and opportunities to look out for nature. There is also a hot tub and gym available on this deck, and here you will pick up your wetsuits and snorkelling equipment.

Your Dining

The spacious single seating dining room is tastefully decorated and affords outside views and on occasion meals can be enjoyed on the Sun Deck. Breakfast and lunch are served buffet style, with a wonderful selection of local fresh produce and both hot and cold dishes. For lunch there is a selection of soup and salad, main courses and dessert. Dinner is a set menu served at your table.

DECK PLAN



This cruise visits out of the way destinations. You will be accompanied by an expedition team and many landings ashore will be made by Zodiac landing craft. Cruises such as these will appeal to the more adventurous and those who enjoy the natural world.



NOBLE CALEDONIA

2 Chester Close, Belgravia, London, SW1X 7BE
+44 (0)20 7752 0000 | info@noble-caledonia.co.uk
www.noble-caledonia.co.uk

