

NOBLE CALEDONIA EXCLUSIVE CHARTER –
NEW DEPARTURE RELEASED DUE TO POPULAR DEMAND

NAMIBIA BY PRIVATE TRAIN

An escorted tour from Walvis Bay to Pretoria
aboard the **Shongololo Express**

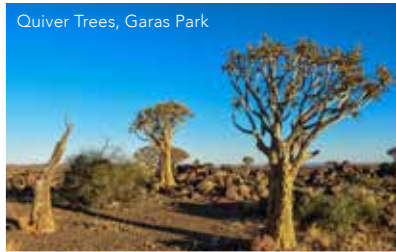
14th to 28th April 2021

NOBLE CALEDONIA





Fish River Canyon



Quiver Trees, Garas Park



Voortrekker Monument, Pretoria



Gemsbok, Sossusvlei

We are delighted to have once again chartered the Shongololo Express Private Train for this spectacular journey through Namibia. The beauty and the colours of Africa truly need to be seen to be believed and are brought right to the compartment doors of our comfortable rolling hotel, while enjoying the excellent service for which Rovos Rail is renowned. Discover the amazing landscapes and rugged grandeur of Namibia, a country of compelling beauty, abundant sunshine and seemingly endless space. Travelling from Walvis Bay, our train journeys through the desert and mountainous landscapes of Namibia, stopping along the way to appreciate the remarkable scenery and view some stunning and diverse wildlife, before it winds its way to Pretoria in South Africa. In addition to our time on board, we will also spend a night in the Namib Desert and at Etosha National Park in stylish lodges from where we can enjoy adventurous game drives.

Highlights of our journey are numerous and include Fish River Canyon, Africa's largest canyon, the rugged Atlantic coast, Swakopmund which is located on the Skeleton Coast and an excellent example of German colonial architecture, and the wildlife-rich Etosha National Park, one of Southern Africa's finest and most important game reserves. However, for many, the ultimate highlight will be the sand dunes at Sossusvlei for which Namibia is so renowned. Sossusvlei lies in the heart of the Namib Desert and is home to the world's tallest sand dunes, some of which tower over 300 metres high. Watching the changing mood and colours at sunrise is a once in a lifetime experience.

THE ITINERARY

Day 1 London to Walvis Bay, Namibia. Fly by scheduled indirect flight.

Day 2 Walvis Bay to Swakopmund.

Arrive in Walvis Bay in the early afternoon and transfer to our hotel, the Hotel Swakopmund. Swakopmund, Namibia's seaside resort on the west coast, is a place of singular charm. It resembles a small Bavarian village nestling between the desert and the sea and enjoys a restful and relaxing atmosphere. The source of Swakopmund's continental vibe is the graceful Art Nouveau buildings dating back to the turn of the previous century. Enjoy an afternoon at leisure and meet this evening for our welcome dinner.

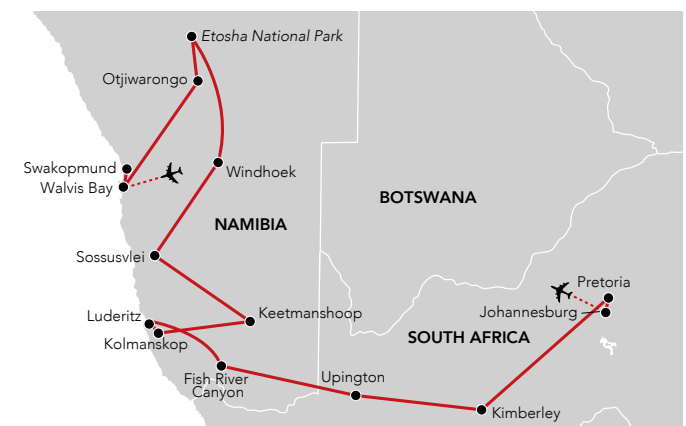
Accommodation & Dining: Swakopmund Hotel. Built in and around the old German Station Building, this modern hotel features an outdoor pool and health club. The rooms are bright and spacious and feature a bathroom with bath and shower, individual

air-conditioning, television, complimentary Wi-Fi, mini-bar and tea/coffee making facilities. (D)

Day 3 Embark Shongololo Express, Walvis Bay to Otjiwarongo. After breakfast we transfer to Walvis Bay Station to embark the Shongololo Express for a mid-morning departure for Otjiwarongo, our overnight stop. Settle into your cabin and enjoy lunch and dinner on board.

Accommodation & Dining: Shongololo Express. (B, L, D)

Day 4 Etosha National Park. This morning we transfer to Mokuti Etosha Lodge, close to the border of the Etosha National Park. The park offers excellent game viewing in one of Africa's most accessible venues. Zebra and springbok are scattered across the endless horizon while the many waterholes attract endangered black rhino, lion, elephant and large numbers of antelope. Enjoy game viewing activities in the park and overnight at the lodge.



Accommodation & Dining: Mokuti Etosha Lodge offers restaurants, two outdoor pools, a spa and gym. All 106 spacious rooms have a private bathroom and mosquito door and are decorated with Namibian crafts and rich fabrics. (B, L, D)

Day 5 Etosha National Park to Kranzberg. An early morning game drive gives us another chance to

observe wild animals close up. We return to our train which departs for Kranzberg.

Accommodation & Dining: Shongololo Express. (B, L, D)

Day 6 Windhoek. Today we arrive in Windhoek situated in Namibia's central highlands, an attractive city surrounded by clusters of hills and the impressive Avas and Eros Mountains. Our city tour starts with



Lion



The 'Big Hole', Kimberley



Elephants, Etosha National Park



Colonial church, Luderitz



Sesriem canyon

a visit to the TransNamib Transport Museum. The museum is situated in the Windhoek Railway Station and was built from 1912 to 1913. In front of the building is the narrow-gauge locomotive (vintage 1900), which used to operate between Swakopmund and Windhoek. The Independence Memorial Museum at the Alte Feste Castle offers a range of displays, including the Social History Gallery and the Independence Display. Both give an insight into Namibia's complex history. At the top of Robert Mugabe Avenue is the Christuskirche or Evangelical Lutheran Church. This is one of the city's most striking landmarks and was built from local sandstone and completed in 1910. Romanesque, neo-Gothic and Art Nouveau styles influenced its design and Kaiser Wilhelm II donated its stained-glass windows. Our last visit is the Namibia Craft Centre in the old Breweries Building. The train departs for Mariental in the afternoon.

Accommodation & Dining: Shongololo Express. (B, L, D)

Day 7 Sossusvlei & Sesriem Canyon. This morning we transfer to the Namib-Naukluft Park. Visit the Sesriem Canyon, shaped over millions of years by the Tsauchab River, it is one of the few places in that area that holds water all year round. The early Afrikaans explorers named the canyon after the fact that they had to use six (ses) leather straps (riem) tied together to create a rope long enough to lower water buckets into the canyon below.

Accommodation & Dining: Sossusvlei Lodge. Overlooking the red sand dunes of the Namib Desert the lodge offers an outdoor pool and a dining terrace overlooking a floodlit waterhole frequently visited by springbok and hyena. The 45 tented rooms have

their own bathroom and feature a private patio area. (B, L, D)

Day 8 Sossusvlei & Namib-Naukluft Park. This morning we visit Dune 45 and Deadvlei. The dunes of the Namib Desert were created by sand carried by the wind from the coast of Namibia. The sand here is five million years old and is red in colour due to its iron-oxide content. As the lighting changes with the time of day, so does the appearance of the dunes' characteristic colour, allowing for interesting photographs at any time. The wind in the Sossusvlei area blows from all directions, which means that the type of the dunes here are known as "star dunes". This is because the winds cause the sand to form a star shape with multiple arms. We will have lunch at a lodge followed by a scenic drive through the Namib-Naukluft Park. The train departs for Keetmanshoop in the late afternoon.

Accommodation & Dining: Shongololo Express. (B, L, D)

Day 9 Keetmanshoop, Garas Park & Quiver Tree Forest. This morning we take a tour of Keetmanshoop, the capital of southern Namibia. We visit Garas Park where we will see the unique quiver trees and the interesting rock formations. The prehistoric quiver tree is not really a tree, rather a plant of the genus aloe, as evident from its scientific name, and one of the few species of aloe that reaches tree proportions, it can grow seven to nine metres high; this visit makes for wonderful photographic opportunities. All aboard for midday when our train departs for Aus.

Accommodation & Dining: Shongololo Express. (B, L, D)

Day 10 Kolmanskop & Luderitz. Our full day tour begins with a stop at the ghost town of Kolmanskop where the first diamonds were

found in Namibia in 1908. From here we visit the harbour town of Luderitz which lies at the end of the currently decommissioned railway line to Keetmanshoop. Luderitz is known for its museum, colonial architecture and wildlife including seals, penguins, flamingos and ostriches. We depart in the evening for Holofo.

Accommodation & Dining: Shongololo Express. (B, L, D)

Day 11 Fish River Canyon. This morning we visit the Fish River Canyon. The Fish River rises in the centre of the country, before flowing south into the Orange River, on Namibia's border with South Africa. In between, it has formed the great Fish River Canyon - the largest canyon in the southern hemisphere, and only second to Arizona's Grand Canyon in terms of size. The vast rocky landscape breaks up into a series of spectacular cliffs, formed by the Fish River as it meanders between boulders over half a kilometre below. Its size is impressive: 161 kilometres long, up to 27 kilometres wide and almost 550 metres at its deepest. Our train departs at midday for Ariamsvlei and Nakop for border formalities. **Accommodation & Dining:** Shongololo Express. (B, L, D)

Day 12 Upington, South Africa. This morning we take a tour of Upington beginning with a drive past the Donkey Memorial, which honours the life of the working donkey, and the railway on the Orange River. We arrive at the Bezalel Wine & Brandy Cellar for a tour and tasting after which, we return to the train and continue towards De Aar. **Accommodation & Dining:** Shongololo Express. (B, L, D)

Day 13 Kimberley. Our tour today takes us to Kimberley, Capital of the Northern Cape, which is well known for the discovery of diamonds which led to its establishment in 1893. Highlights of the day include a visit to the Big Hole Diamond Mine Museum, the William Humphreys Art Gallery and the McGregor House Museum. We depart in the afternoon for Potchefstroom. **Accommodation & Dining:** Shongololo Express. (B, L, D)

Day 14 Pretoria to London. After breakfast we arrive at Rovos Rail Station in Pretoria where we disembark. We stop for lunch and take a city tour of Pretoria before we transfer to Johannesburg Airport for our return flight to London. **Dining:** (B, L)

Day 15 London. Arrive today.

PRICES PER PERSON

Based on double occupancy

Category	Price
Gold Cabin	£6395
Emerald Cabin	£7995
Gold Cabin for sole use	£9195

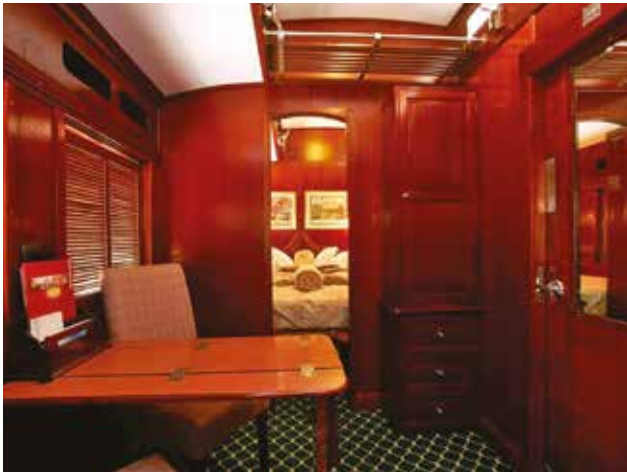
PRICE INCLUDES: Economy class scheduled air travel
 • Overnight hotel accommodation in Swakopmund • Nine nights aboard the Shongololo Express on a full board basis including house wine, beer & soft drinks with lunch & dinner • Overnight accommodation in Sossusvlei, Etosha National Park & Swakopmund as described
 • Meals as listed (B=Breakfast, L=Lunch, D=Dinner) • Excursions
 • Entrance fees • Local guides
 • Noble Caledonia Tour Manager
 • Gratuities • Onboard Train Manager • Transfers • Airport taxes.
Not Included: Travel insurance, visas, lunch on day 1.



Observation Car



Gold Cabin



Emerald Cabin



Lounge Car

THE SHONGOLOLO EXPRESS

The Shongololo Express, as a rolling hotel, offers sleeping compartments in two categories, two air-conditioned dining cars, a bar car and an observation car. The tempting three course dinners are served in a single sitting. The bar car, open around the clock, is ideal for relaxing over a freshly tapped beer or a glass of South African wine and is a popular spot for reading. Complimentary tea and coffee are available on board at all times.

All of the sleeping compartments offer a private shower and toilet, adjustable air conditioning, 220/230 V sockets, a small safe, towels and clothes hangers. The beds are made up daily by your train attendants. There is no formal dress code on your private train during the day. Dinner on board is smart casual. A laundry service is available during the entire trip (at cost). Large pieces of luggage can be stowed beneath the berths or on the upper luggage racks. However, since space on board is limited, we do recommend taking soft-sided luggage rather than hard-side cases.

Your Accommodation

Gold Cabins: The compartments (approximately seven square metres) are equipped with two individual berths next to each other, or a double

berth and a compact wardrobe. A hairdryer and small toiletries are also provided. Still water is provided daily in your compartment. There are a total of twenty four Gold Cabins.

Emerald Cabins: The Emerald sleeping compartments (approximately ten square metres) are equipped with two single berths or a double berth and a compact wardrobe. Each compartment in this category also has a small seating area. A hairdryer and small toiletries are also provided. Still water is provided daily in your compartment. There are a total of 14 Emerald Cabins.

Your Dining

Meals are served in a single sitting in the charming Victorian atmosphere of the dining

cars and are complemented by a selection of South African wines (not included). There is an accent on fresh, local ingredients and traditional dishes.



Dining Car



NOBLE CALEDONIA

2 Chester Close, Belgravia, London, SW1X 7BE
+44 (0)20 7752 0000 | info@noble-caledonia.co.uk | noble-caledonia.co.uk



Our current booking conditions apply to all reservations and are available on request. Itinerary and lodges subject to change.
Cover image: Sossusvlei