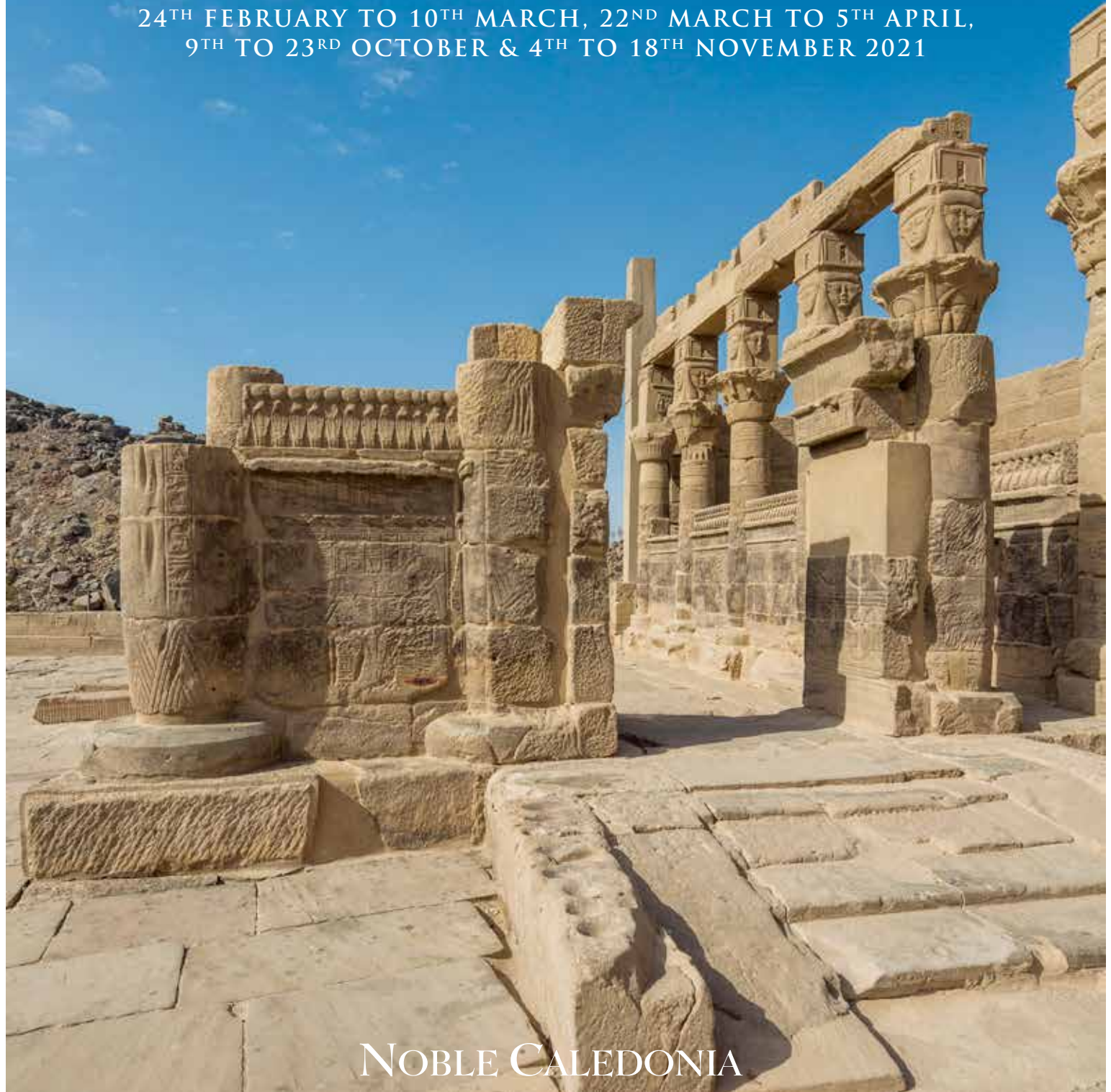


SPECIAL  
OFFER - SAVE  
**£200**  
PER PERSON

# JEWELS OF THE NILE

A RIVER CRUISE ALONG THE NILE FROM CAIRO  
TO ASWAN ABOARD THE SS MISR

24<sup>TH</sup> FEBRUARY TO 10<sup>TH</sup> MARCH, 22<sup>ND</sup> MARCH TO 5<sup>TH</sup> APRIL,  
9<sup>TH</sup> TO 23<sup>RD</sup> OCTOBER & 4<sup>TH</sup> TO 18<sup>TH</sup> NOVEMBER 2021



NOBLE CALEDONIA



Temple of Queen Hatshepsut



Discover the intriguing ancient history of Egypt during this cruise aboard the SS Misr, a propeller steam vessel accommodating just 44 guests and discover the stretch of the Nile between Cairo and Aswan. Beginning in Cairo we will see the impressive pyramids and the Great Sphinx as well as some distinctive Egyptian art and treasures from the tomb of Tutankhamun in the new Grand Egyptian Museum. We then continue along the Nile visiting some of the less famous but historically important sites including Beni Hassan private tombs which, through superb wall paintings, provide a panorama of daily life in Egypt four thousand years ago from the leisure pursuits of the elite to workers in vineyards or children playing games. We also visit Abydos and Dendera temples and Tel El Amarna where you can survey the ruins of the temples and palaces of King Akhenaten and Queen Nefertiti.

Pharaohs and queens of Ancient Egypt sailed often on the River Nile in luxurious royal boats – by far the most rewarding way to see the landscape and monuments of their realm. Evoking this regal way of travel, we will travel at a gentle speed aboard the SS Misr which is essential to be able to drink in the rhythm of life and scenes which have changed little over hundreds of years on the banks of the Nile. Accompanying us will be excellent local guides and our expert Guest Speaker who will greatly enhance your enjoyment and knowledge of this ancient land.

SS Misr



## THE SS MISR – A VERY SPECIAL VESSEL

We are delighted to have once again chartered the elegant SS Misr. Originally built in Preston in 1918 by the Royal Navy, the SS Misr is a propeller steam vessel. Having served in World War II in May 1918, the SS Misr ('The Kingdom of Egypt' in Arabic) also participated as a warship and troop transporter for the British Egyptian joint task force. After retiring from active duty, SS Misr went through an entire overhaul; converted into a luxury yacht in 1938 to be used by Egypt's last Monarch, King Farouk. After Egypt's monarchy was overthrown in 1952, the SS Misr became state property and was allocated to the Egyptian Ministry of Irrigation where it languished in a shipyard in a Cairo suburb until it was purchased in 2003. With special permission from the state authorities, the steam ship was then entirely rebuilt according to its original drawings and re-launched and returned to the glorified splendour of her heyday in 2006.

## GUEST SPEAKERS



**George Hart**

Following degrees in Classics and in Egyptian Art and Archaeology from University College London, George joined the staff of the British Museum in 1973. He was the Principal

Lecturer on the British Museum's antiquities collections from Egypt, Greece, the Levant and civilisations of the Mediterranean World and ran courses on Ancient Egyptian Hieroglyphs. George was Chairman of the Friends of the Petrie Museum of Egyptian Archaeology for the first twelve years after its foundation in 1988 and Committee Member of the Egypt Exploration Society for a number of years. He is also an Editorial Advisor on its bulletin, Egyptian Archaeology. Having taken early retirement from the British Museum in 2004 to devote more time to writing, he is a regular speaker on Nile cruises. *George will be joining our 24th February, 9th October & 4th November departures.*



**Dr David Price-Williams**

David Price Williams has a first degree from the University of Wales in Ancient Near Eastern languages with a subsidiary in Attic and Koine Greek. His post-graduate

work and his doctorate is in Near Eastern archaeology. David has been associated with the eastern Mediterranean and the Near East for more than 40 years. He is deeply involved with all aspects of Near Eastern culture, history and archaeology. David has just retired after almost forty years lecturing at the Institute of Archaeology for the University of London Extra Mural Department. He is the author and co-author of numerous academic papers and several books. David has designed and lectured on many tours and is very familiar with the archaeological sites of Turkey, Syria, Egypt and Jordan. He is a Fellow of the Royal Geographical Society, an elected life member of the Society for Old Testament Studies as well as the Southern African Quaternary Research Association.

*David will be joining our 22nd March departure.*



Abydos Temple



Pyramids, Giza



Dendera Temple



Temple of Philae



## THE ITINERARY

**Day 1 London Heathrow to Cairo, Egypt.** Fly by scheduled flight to Cairo. Upon arrival transfer to the SS Misr and embark. Moor overnight this evening in Cairo.

**Day 2 Cairo.** Our tour today is dedicated to the capital city of Cairo. We visit the impressive Pyramids of Giza and the Sphinx, the only survivor of the Seven Wonders of the Ancient World and the tombs of the great Pharaohs and their queens. We then continue onto the Grand Egyptian Museum (GEM). This complex is a cultural hub and includes one of the largest museums in the world displaying the heritage of a single civilisation. The museum contains over 100,000 artefacts, reflecting Egypt's past from prehistory until the Greek and Roman Periods. As you enter the museum, you cannot miss the colossal statue of King Ramses II, nor the 87 huge royal artefacts exhibited at the grand stairs. These stairs lead up to an impressive 28 metre high glass facade overlooking the pyramids of Giza. The museum also hosts over 5000 artefacts from the tomb of the golden Pharaoh Tutankhamun. Return to the ship for lunch with

the rest of the afternoon at leisure. Join your fellow travellers this evening for a welcome cocktail party. Moor overnight in Cairo.

**Day 3 Cruising.** Enjoy a relaxing day on board as we cruise to Beni Suef where we will moor overnight.

**Day 4 Beni Suef & Minya.** This morning we visit the Maydom pyramid which is dedicated to the King Snefru of the 4th dynasty. We return to the ship for lunch and enjoy the afternoon sailing to Minya. Moor overnight in Minya.

**Day 5 Beni Hassan.** Today we visit the Middle Kingdom tombs at Beni Hassan, an ancient Egyptian cemetery site, located south of Minya. The necropolis of Beni Hassan reflects the political differences between the province rulers and the Pharaoh Kings. Due to the layout and more complex decorations, the tombs mark a transition stage in the style of the tombs from the Old Kingdom to the New Kingdom. Return to the vessel for lunch and enjoy daylight sailing to Tel El Amarna. Moor overnight in Tel El Amarna.

**Day 6 Tuna El Gebel, Ashmunein & Tel El Amarna.** This morning we visit Tuna El Gebel and Ashmunein, where the oldest monument is a boundary stela of Akhenaten and Nefertiti. The site is best known for its animal necropolis housing thousands of mummified baboons and Ibis sacred to Thoth. We continue to Ashmunein (Hermopolis Magna): known in ancient times as 'Khemenu', or the 'City of the Ogdoad', referring to the eight primeval gods who, according to ancient Egyptian Mythology, created the world. Today, the site houses the ruins of the Temple of Thoth, Temple of Amun, a small open air museum displaying two massive statues of 'Thoth' as a baboon. There are also some remains of a Roman Christian Basilica, which was

built over the site of an earlier Ptolemaic temple. The structure retains most of its granite columns and it is the only basilica to have survived to this degree of preservation anywhere in Egypt. After lunch we enjoy a tour to Akhenaten's royal city, tomb and palace at Amarna, it is here we visit the tombs of Pentu, Panehesy, Meryre and the Royal tomb of Akhenaten. Enjoy the rest of the afternoon relaxing on board. We will moor overnight in Tel El Amarna.

**Days 7 & 8 Cruising.** A relaxing interlude to our journey. Spend time on deck enjoying the passing scenery and attend a lecture or two.

**Day 9 Abydos Temple.** This morning we arrive in Balyana and after breakfast, we transfer to the temple that the Greeks called the Memnonium in Abydos, dedicated to Seti, Osiris, Isis, Ptah, Ptah-Sokar, Nefertem, Re-Horakhty, Amun and Horus. Its structure, built of white limestone is one of the most impressive religious structures in Egypt. Return to the ship this afternoon and enjoy the rest of the day at leisure on board.

**Day 10 Dendera Temple & Luxor.** This morning is dedicated to the goddess Hathor as we visit the Dendera Temple, also known as the 'castle of the Sistrum'. Hathor was the goddess of love, joy and beauty and the Dendera Temple was associated with healing. Spend a leisurely afternoon on board sailing to Luxor and upon arrival we will have an evening visit to the Luxor Museum, an archaeological museum which was inaugurated in 1975. Whilst the range of artefacts on display is more restricted than the country's main collections in the Museum of Antiquities in Cairo; this was deliberate since the museum prides itself on the quality of the pieces it has, the uncluttered way in which they are displayed and the clear multilingual labelling used. We will moor overnight in Luxor.





**Day 11 Luxor.** Today we visit the West Bank, one of the most famous and important archaeological sites in the world. See the Valley of the Kings, burial ground of the pharaohs for a period of 500 years. The tombs vividly depict the journey of the sun god and pharaoh through the dangers of the underworld. In the temple of Queen Hatshepsut you will discover scenes commemorating the reign of this exceptional monarch such as the ambitious voyage where she sent her ships on the Red Sea to the mysterious land of Punt. We stop at the Colossi of Memnon to witness the two imposing 18 metre high quartzite seated statues which marked the entrance to the now vanished memorial temple of the pharaoh Amenhotep III whose reign in the 14th century BC was one of the most opulent in Egyptian history.

**Day 12 Luxor.** This morning we visit the temples of Karnak and will witness the unbelievably vast array of monuments dedicated to Amun-Ra, king of the gods, his wife Mut and their son Khonsu. Just two of the highlights you will see are the great hypostyle hall with over 130 columns some 22 metres high and the obelisk of the powerful queen pharaoh Hatshepsut. To conclude our tour we will visit the Luxor Temple, situated on the east bank of the river Nile. This evening enjoy a Galabya party on board as we sail to Edfu and moor overnight.

**Day 13 Edfu & Kom Ombo.** Today we visit the Edfu Temple, an ancient Egyptian temple that is set on the west bank of the Nile and is said to be one of the best preserved temples in Egypt. Dedicated to the Falcon god Horus and built in the Ptolemaic period between 237 and 57 BC. Set sail this afternoon to Kom Ombo and after lunch we depart for a visit to the temple of Kom Ombo. It was mainly built during the Ptolemaic dynasty and completed under the

Roman Emperors. The temple is unique due to its 'double' design which meant that there were courts, halls, sanctuaries and rooms duplicated for the two gods that worshipped here. The southern half of the temple was dedicated to the crocodile god Sobek and the northern part of the temple was dedicated to the falcon god Haroeris. Among the carved reliefs along the inside of the outer wall are images thought to be connected with Egyptian medicine, including displays of birthing chairs and surgical instruments.

**Day 14 Aswan.** This morning we will visit the high Dam at Aswan, considered an engineering miracle when it was built in the 1960s with a huge impact on the economy and culture in Egypt in the last century. Today it provides electricity and irrigation for the whole of Egypt. We continue to the temple island of Philae, dedicated to the goddess Isis, wife of Osiris and mother of Horus. The story of Osiris is represented on the walls of the temple, with two of its inner chambers which are rich in

symbolic imagery. The temple was originally on Philae Island but because of high water levels was dismantled in 1977 and reconstructed on a nearby higher island called Agilkia. The main elements of the temple such as the two Pylons, hypostyle halls and sanctuaries were built by the Ptolemaic kings. Later the Roman rulers added the colonnades in front of the temple as well as the ceremonial entrance to the island known as Trajan's Kiosk. We break our day with afternoon tea at the Sofitel Legend Old Cataract Hotel with its fine Nile views. Relax and indulge in the wonderful views of the Nile while experiencing the luxurious tradition of a sumptuous afternoon tea. We will continue to the Nubian Museum, a complex of 50,000 square metres which is enclosed by walls to evoke the traditional Nubian village architecture. This evening enjoy a farewell dinner on board.

**Day 15 Aswan to London Heathrow.** Disembark this morning and fly by scheduled indirect flight to London.

## PRICES PER PERSON

Based on double occupancy

### SPECIAL OFFER – SAVE £200 PER PERSON FOR A LIMITED TIME ONLY

Cat	Cabin Description	Brochure Price	Special Offer Price
4	Twin/Double cabin on lower/main deck	£5795	£5595
3	Twin/Double cabin on upper deck	£6195	£5995
2	Suite on main/upper deck	£6495	£6295
1	Panorama suite on main deck	£6795	£6595
4	Twin/Double cabin on lower/main deck for sole use	£6895	£6695

**PRICE INCLUDES:** Economy class scheduled air travel • 14 nights aboard the SS Misr on full board basis • Wine or beer & unlimited soft drinks with lunch & dinner • Shore excursions with local English speaking guides • Tour Manager • Guest Speaker • Gratuities • Transfers • Airport taxes.

**Not Included:** Travel insurance, Egyptian visa.

# SS MISR



For our journeys along the Nile, we are delighted to have chartered a very special and unique vessel, the SS Misr. Originally constructed in Preston by the Royal Navy in 1918, the SS Misr was purchased and later converted into a luxury Nile steamer for King Farouk. Now fully restored to a five-star deluxe propeller steam vessel she accommodates just 44 passengers in spacious, air-conditioned cabins and suites. Misr means 'the Kingdom of Egypt' and the décor throughout the vessel reflects the period.

## Your Cabin/Suite

Each cabin and suite has its own individual style and all feature a private balcony, air conditioning, en-suite bathroom with bathtub and shower, hairdryer, mini-bar, robes and television. The suites on the Upper Deck are almost 50% larger in size than the standard cabins. The 14 category 3 and 4 twin/double cabins measure 21 square metres and feature a sweeping window that opens up to a private terrace with chairs so that guests can enjoy the spectacular view of the Nile at all times. The category 2 suites are approximately 30 square metres. Spacious and welcoming, these exquisitely appointed suites offer the perfect refuge to unwind after a day of adventure and sightseeing. Luxuriously designed, each suite includes an elegant living area that contains a stylish loveseat and chairs, complemented by floor-to-ceiling windows that open to a private terrace so that guests can enjoy the spectacular view of the Nile. The category 1 panorama suites are approximately 35 square metres and are situated at the front of the vessel and offer impressive panoramic views. Unlike the other accommodations, these suites come with a private, furnished panoramic terrace that offers a spectacular 180-degree view of the Nile, so that guests can enjoy the inspiring view from every angle while cruising. This is the perfect spot to relax after a long day with a drink or book, or to watch the leisurely sail along the Nile to the next destination.

## Your Dining

The Marasem Restaurant, situated on the main deck serves international cuisine and seats all passengers in one open seating arrangement. Breakfast and lunch are buffet-style whilst dinner is seated waiter service. Tables seat six to eight people. Tea and coffee are served on a complimentary basis after all meals and there are tea and coffee amenities in the cabins. A complimentary bottle of water will be provided in your cabin.







Marasem Restaurant



Dahabia Bar



Sun deck



Saraya Lounge

### Your Space

The SS Misr is both elegantly furnished and spacious throughout. The Saraya Lounge and Dahabia Bar are located on the higher decks offering wonderful views of the Nile. The period-style restaurant accommodates all guests at one sitting. There is also a lower Sun Deck with comfortable wicker chairs and an upper Sun Deck with a pool and sun beds for relaxation. The onboard attentive staff are always available to offer a cool beverage whilst watching the ever changing passing scenery. The ship also has an onboard souvenir and gift shop selling jewellery and local handmade gifts.



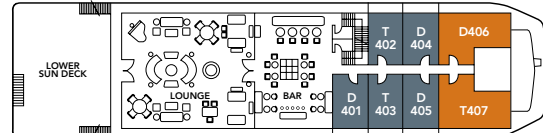
Pool

## DECK PLAN

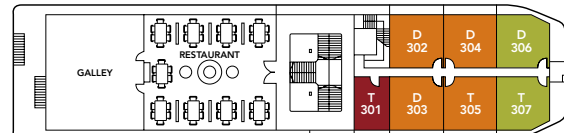
### SUN DECK



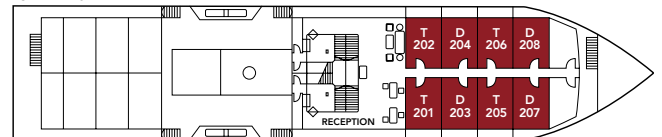
### UPPER DECK



### MAIN DECK



### LOWER DECK



■ CATEGORY 1  
 ■ CATEGORY 2  
 ■ CATEGORY 3  
 ■ CATEGORY 4  
 T – Twin / D – Double

# NOBLE CALEDONIA

2 Chester Close, Belgravia, London, SW1X 7BE  
 +44 (0)20 7752 0000 | info@noble-caledonia.co.uk | noble-caledonia.co.uk



All special offers are subject to availability. Our current booking conditions apply to all reservations and are available on request.

Cover image: Temple of Isis, Philae