

SPECIAL  
OFFER - SAVE  
**£200**  
PER PERSON

# JEWELS OF THE NILE

A seven night cruise along the Nile aboard the  
44-passenger SS Misr combined with a  
three night stay in Cairo

29<sup>th</sup> January to 8<sup>th</sup> February  
& 19<sup>th</sup> to 29<sup>th</sup> November 2027

NOBLE CALEDONIA



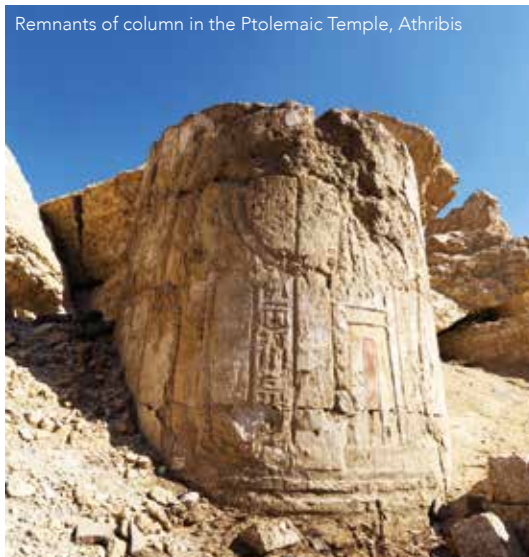


If you are contemplating escaping the British winter for some warmth and enjoy discovering ancient sites with a small group of like-minded travellers, here is a perfect opportunity. Our itinerary begins with a three night stay in Cairo where we visit the Pyramids of Giza and the Great Sphinx, explore the remarkable collections of the Grand Egyptian Museum, and discover the ancient archaeological site of Saqqara, home to the world's oldest pyramid. Whilst visiting the Pyramids of Giza we have also arranged for an exclusive talk on the latest archaeological discoveries by Dr Ashraf Mohie El-Din, Director of the Giza Plateau.

Following our time in Cairo we fly south to Luxor to follow in the wake of the pharaohs on a seven-night cruise along the River Nile aboard the luxurious, 44-passenger SS Misr which we have exclusively chartered for our journey. A journey by river is the most rewarding way to experience the Nile's landscapes and monuments and we will explore some of Egypt's most famous sites, including the Valley of the Kings, the temples of Karnak, Dendera and Abydos, alongside lesser-known archaeological treasures such as the ancient city of Athribis and the remarkable White and Red Monasteries, important centres of early Coptic Christianity. Accompanying us will be excellent local guides who will greatly enhance your enjoyment and knowledge as we discover some of the most iconic sites of this ancient land.

We have designed this new and unique itinerary to appeal to both those who may have cruised the Nile before but did not have the benefit of extended time in Cairo, or the opportunity to visit the ancient city of Athribis and the Coptic Monasteries, as well as those who will be experiencing a cruise along the Nile for the first time. We will cruise at a gentle speed which is essential to be able to drink in the rhythm of life on the banks of the river. From the vessel's spacious decks you can observe the dramatic division between the fertile flood-plain and the arid majesty of the deserts flanking the river and witness traditional village life. Although the Egypt of the pharaohs came to an end almost two millennia ago, our journey will leave you with a wealth of memories about its people, its monuments and its mysteries.





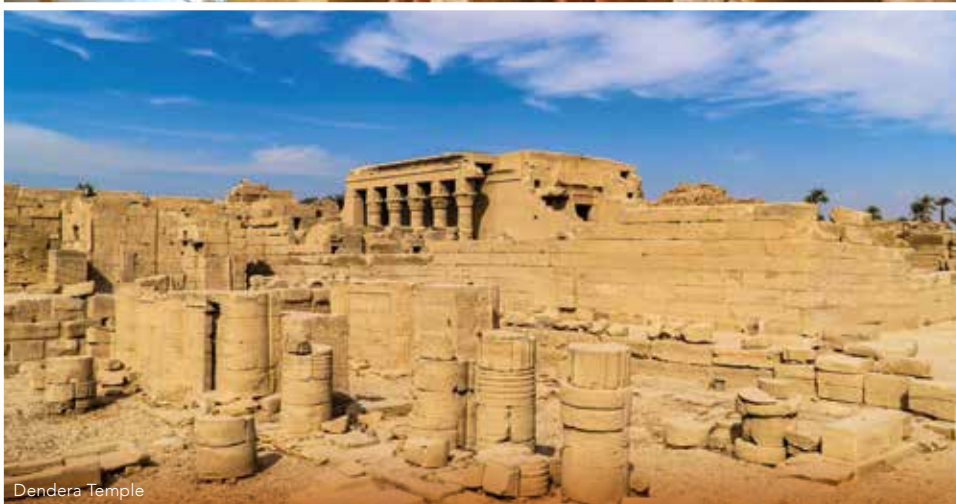
Remnants of column in the Ptolemaic Temple, Athribis



Carvings from the Tomb of Irukaptu, Saqqara



Ramesses II statue and Karnak Temple, Luxor



Dendera Temple

## The Itinerary

**Day 1 London Heathrow to Cairo, Egypt.** Fly by scheduled flight to Cairo. Upon arrival transfer to the Nile Ritz Carlton Hotel for a three night stay.

**Day 2 Cairo.** This morning is dedicated to the GEM (Grand Egyptian Museum). This complex is a cultural hub and includes one of the largest museums in the world, displaying the heritage of a single civilisation. The museum contains over 50,000 artefacts, reflecting Egypt's past from prehistory until the Greek and Roman periods, including over 5,000 artefacts from the tomb of the golden pharaoh, Tutankhamun. After lunch we will return to the hotel and enjoy the remainder of the day at leisure before we meet for dinner at the hotel this evening. (B, L, D)

**Day 3 Cairo.** We start the day by visiting the impressive Pyramids of Giza and the Great Sphinx, the only survivor of the Seven Wonders of the Ancient World, as well as the tombs of the great pharaohs and their queens. During our visit we will enjoy an exclusive lecture by Dr Ashraf Mohie El-Din on the latest archaeological discoveries on the Giza Plateau. After lunch, we continue with a visit to Saqqara, the largest archaeological site in Egypt. Saqqara was the vast necropolis of the ancient Egyptian capital, Memphis, and is home to the nation's oldest pyramid: the Step Pyramid of Djoser. Nobles were laid to rest here over a period of around 3,500 years, and the enormous ancient burial ground is scattered with smaller pyramids, tombs and funerary complexes. We end the day by visiting Memphis, the first capital of Egypt, founded by King Narmer in 3200 BC, in a strategic position on the west bank of the Nile. (B, L)

**Day 4 Cairo to Luxor.** Check out this morning and transfer to the airport for our scheduled flight to Luxor. Upon arrival we will transfer to the SS Misr and embark. Moor overnight in Luxor. (B, D)

**Day 5 Dendera Temple.** This morning is dedicated to the goddess Hathor as we visit the Dendera Temple, also known as the 'castle of the

Sistrum'. Hathor was the goddess of love, joy and beauty, and the Dendera Temple was associated with healing. Patients who travelled to the temple for cures could stay in special buildings to rest, sleep and commune with the gods in their dreams. Return to the SS Misr for lunch and spend a leisurely afternoon on board sailing along the Nile. (B, L, D)

**Day 6 Abydos Temple.** This morning we arrive in El Balyana and, after breakfast, will transfer to the temple that the Greeks called the Memnonium in Abydos, dedicated to Seti, Osiris, Isis, Ptah, Ptah-Sokar, Nefertem, Re-Horakhty, Amun and Horus. Its structure, built of white limestone, is one of the most impressive religious structures in Egypt. Return to the ship in the late afternoon for lunch and enjoy the rest of the day relaxing on board while we sail to Sohag and moor overnight. (B, L, D)

**Day 7 Athribis & Coptic Monasteries.** After breakfast, we visit the ancient city of Athribis. Founded in the fourth century BC during the Ptolemaic period, the Temple of Ptolemy XII is one of the most important in the area. It was completed by the Roman emperors from Tiberius until Hadrian, dedicated to the cult of Min-Ra, and remains of a Coptic basilica were also excavated here. Afterwards we continue to the White Monastery which was founded in the fourth century AD by Sait Shenouda and was once inhabited by hundreds of monks and is now home to just 23 monks. We then proceed to the Red Monastery, also founded in the fourth century AD by Saint Pishoy with reused materials from Athribis Greco-Roman area. Here we can view the Coptic art, interact with local monks of the very first Christian monastic order and explore the sacred sites. Return to the ship in the late afternoon for lunch and enjoy the rest of the afternoon sailing. (B, L, D)

**Day 8 Cruising.** A relaxing interlude to our journey. Spend time on deck enjoying the passing scenery. (B, L, D)



The Nile



Queen Hatshepsut Temple



Cairo

### NILE RITZ-CARLTON HOTEL, CAIRO

Prior to embarking the SS Misr we will spend three nights in Cairo exploring the many wonders of the Egypt's magnificent capital city. We have chosen the Nile Ritz-Carlton Hotel which is set along the Nile River in the heart of downtown Cairo, between the iconic river and Tahrir Square. The Nile Ritz-Carlton features a rich legacy of ancient tradition combined with modern luxury. The elegantly appointed rooms feature décor inspired by ancient Egypt's royalty, with rich fabrics and historic black-and-white photographs. Facilities include a rooftop lounge with magnificent views over the city, a heated outdoor pool, a gym, and a spa offering pampering treatments inspired by Egyptian beauty rituals.



Deluxe Twin Room

**Day 9 Luxor.** Enjoy a leisurely morning sailing to Luxor. After lunch on board, we visit the magnificent temples of Karnak and will witness the vast array of monuments dedicated to Amun-Ra, king of the gods, his wife Mut, and their son Khonsu. Just two of the highlights we will see are the great hypostyle hall with over 134 columns, some 22 metres high, and the obelisk of the powerful queen pharaoh Hatshepsut. We then continue to the Luxor Museum, an archaeological museum that was inaugurated in 1975. Whilst the range of artefacts on display is more restricted than the country's main collections in the Museum of Antiquities in Cairo, this was deliberate, since the museum prides itself on the quality of the pieces it has. (B, L, D)

**Day 10 Luxor.** This morning we visit the West Bank, one of the most famous and important archaeological sites in the world. See the Valley of the Kings, burial ground of the pharaohs for a period of some 500 years. The tombs vividly depict the journey of the sun god and the pharaoh through the dangers of the underworld. In the Temple of Queen Hatshepsut, you will discover scenes commemorating the reign of this exceptional monarch, such as the ambitious voyage where she sent her ships across the Red Sea to the mysterious land of Punt. We will also visit Howard Carter House, the original home in which the British archaeologist lived during his search for Tutankhamun's tomb, now a museum featuring original artefacts from his time in Luxor. After lunch on board, we visit the Luxor Temple, situated on the east bank of the River Nile, built by Amenhotep III, and dedicated to the cult of goddess Mut. View the Medieval mosque, the Roman temple, the chapel of Alexander the Great, and the divine birth room of its founder. (B, L, D)

**Day 11 Luxor to London Heathrow.** Disembark this morning and transfer to the airport for our scheduled flight to London. (B)

### PRICES PER PERSON

Based on double occupancy

#### SPECIAL OFFER – SAVE £200 PER PERSON FOR A LIMITED TIME ONLY

Cat	Cabin Description	Brochure Price	Special Offer Price
4	Twin/Double cabin on lower/main deck	£6195	£5995
3	Twin/Double cabin on upper deck	£6595	£6395
2	Suite on main/upper deck	£7995	£7795
1	Panorama suite on main deck	£8495	£8295
4	Twin/Double cabin on lower/main deck for sole use	£7595	£7395

**PRICE INCLUDES:** Economy class scheduled air travel • Three nights at the Nile Ritz Carlton Hotel • Seven nights aboard the SS Misr • Meals as indicated (B - Breakfast, L - Lunch, D - Dinner) • Wine or beer & unlimited soft drinks with lunch & dinner • Shore excursions with local English speaking guides • An exclusive lecture at the Great Pyramids • Noble Caledonia Tour Manager • Guest Speaker • Gratuities • Transfers • Airport taxes.  
**Not Included:** Travel insurance, Egyptian visa.



## SS MISR

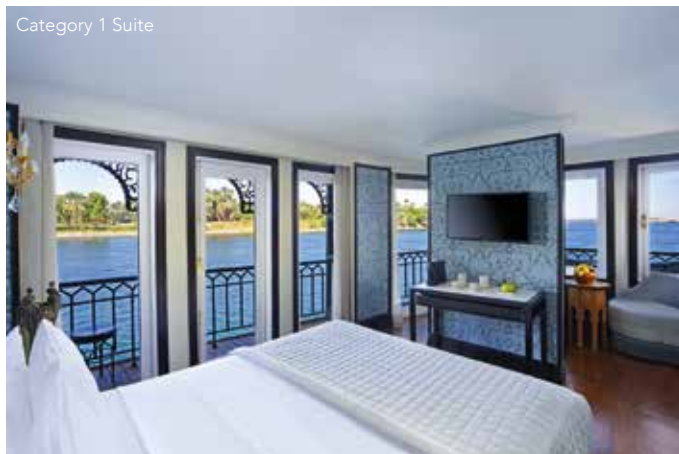
For our journeys along the Nile, we are delighted to have once again chartered the recently refurbished SS Misr, a very special and unique vessel. Originally constructed in Preston by the Royal Navy in 1918, the SS Misr was purchased and later converted into a luxury Nile steamer for King Farouk. Now fully restored to a five-star deluxe propeller steam vessel she accommodates just 44 passengers in spacious, air-conditioned cabins and suites. Misr means 'the Kingdom of Egypt' and the décor throughout the vessel reflects the period.

### Your Cabin/Suite

Each cabin and suite has its own individual style and all feature a private balcony, air conditioning, en-suite bathroom with bathtub and shower, hairdryer, mini-bar, robes and television. The suites on the Upper Deck are almost 50% larger in size than the standard cabins. The 14 category 3 and 4 twin/double cabins measure 21 square metres and feature a sweeping window that opens up to a private terrace with chairs so that guests can enjoy the spectacular view of the Nile at all times. The category 2 suites are approximately 30 square metres. Spacious and welcoming, these exquisitely appointed suites offer the perfect refuge to unwind after a day of adventure and sightseeing. Luxuriously designed, each suite

includes an elegant living area that contains a stylish loveseat and chairs, complemented by floor-to-ceiling windows that open to a private terrace so that guests can enjoy the spectacular view of the Nile. The category 1 panorama suites are approximately 35 square metres and are situated at the front of the vessel and offer impressive panoramic views. Unlike the other accommodations, these suites come with a private, furnished panoramic terrace that offers a spectacular 180-degree view of the Nile, so that guests can enjoy the inspiring view from every angle while cruising. This is the perfect spot to relax after a long day with a drink or book, or to watch the leisurely sail along the Nile to the next destination.

Category 1 Suite



Category 2 Suite







## Your Dining

The Marasem Restaurant, situated on the main deck serves international cuisine and seats all passengers in one open seating arrangement. Breakfast and lunch are buffet-style whilst dinner is seated waiter service. Tables seat six to eight people. Tea and coffee are served on a complimentary basis after all meals and there are tea and coffee amenities in the cabins. Water is replenished daily in the cabins and refillable water bottles are also provided for use during the excursions.

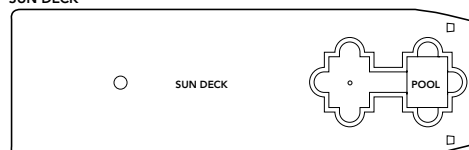
## Your Space

The SS Misr is both elegantly furnished and spacious throughout. The Saraya Lounge and Dahabia Bar are located on the higher decks offering wonderful views of the Nile. The period-style restaurant accommodates all guests at one sitting. There is also a lower Sun Deck with comfortable wicker chairs and an upper Sun Deck with a pool and sun beds for relaxation. The onboard attentive staff are always available to offer a cool beverage whilst watching the ever changing passing scenery. The ship also has an onboard souvenir and gift shop selling jewellery and local handmade gifts.

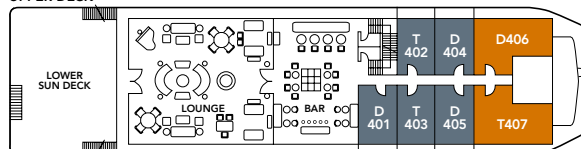


## DECK PLAN

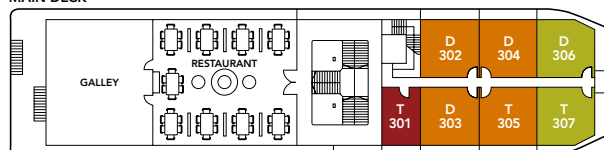
### SUN DECK



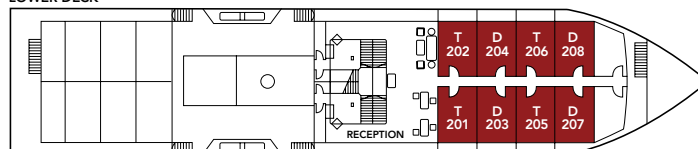
### UPPER DECK



### MAIN DECK



### LOWER DECK



■ CATEGORY 1 ■ CATEGORY 2 ■ CATEGORY 3 ■ CATEGORY 4

T - Twin / D - Double



# NOBLE CALEDONIA

2 Chester Close, Belgravia, London, SW1X 7BE  
+44 (0)20 7752 0000 | [info@noble-caledonia.co.uk](mailto:info@noble-caledonia.co.uk)  
[www.noble-caledonia.co.uk](http://www.noble-caledonia.co.uk)



All special offers are subject to availability. Our current booking conditions apply to all reservations and are available on request.  
Cover image: Karnak Temple.