

SPECIAL
OFFER – SAVE
£300
PER PERSON

BAJA CALIFORNIA AMONG THE GREAT WHALES

A CRUISE ALONG THE COAST OF BAJA CALIFORNIA SUR
ABOARD THE NATIONAL GEOGRAPHIC VENTURE
INCLUDING A FOUR NIGHT STAY IN MEXICO CITY

25TH JANUARY TO 7TH FEBRUARY 2027



NOBLE CALEDONIA



Just south of California lies an inland sea known as the Gulf of California, Sea of Cortez, or Sea of Cortés. A birder's paradise, this rich archipelago serves as an important bird refuge and migration corridor. It is a place author John Steinbeck found "ferocious with life" and described by Jacques Cousteau as "the aquarium of the world" and we tend to agree. UNESCO declared it a World Heritage Site and Biosphere Reserve, noting it as one of the most biologically diverse marine environments on Earth.

Each winter, thousands of gray whales migrate south from their Arctic feeding grounds to Baja California Sur's sheltered Pacific coastal lagoons. Their migration is the longest of any animal, covering more than 10,000 miles. Join the National Geographic Venture and discover a world of breathtaking beauty on a journey through these wildlife rich waters and to islands that are home to both plants and animals found nowhere else. Baja is an inexhaustibly rich place to explore and during our expedition we hope to observe grays during their breeding, calving and nurturing cycle and see fins, blues, orcas and humpbacks.

Baja is one of those rare geographies where the desert meets the sea. Its topography is stunning; there is literally something to see everywhere. Our ethos of using small ships to deliver big experiences comes into its own in this region and especially when working with National Geographic-Lindblad Expeditions and their 100-passenger vessel, the National Geographic Venture for which we have an allocation of cabins for this adventure. Board local panga boats to enter pristine lagoons for up-close wildlife encounters, witness an undersea wonderland and experience the most beautiful sunsets on Earth. Swim with curious sea lions, watch whales, and discover a centuries-old mission town. Hike nearby shores, rimmed with white-sand beaches and cactus-clad ridges, then cool off in impossibly brilliant turquoise waters. Coastal mangroves and dunes, along with desert scrub and red rock cliffs provide the backdrop. To explore this extraordinary place is to know firsthand how small the human presence here truly is.

In addition, we have three days before our cruise to explore Mexico City which is more than just a large, busy metropolis and well worth a few days of exploration. With a magnificent backdrop of the Popocatepetl and Iztaccihuatl volcanoes, this fascinating city is an eclectic mix of ancient ruins, colonial buildings and modern high rises and highlights will include our visits to the world-renowned Anthropological Museum, the ancient city ruins of Teotihuacan and the vibrant Coyocan neighbourhood which was home to Frida Kahlo.

Why National Geographic-Lindblad Expeditions & the National Geographic Venture

For this expedition we are working with our long time associates National Geographic-Lindblad Expeditions who are making a limited number of cabins available for Noble Caledonia guests. Lindblad's legacy of exploration in Baja California runs deep: for over 40 years, they have been taking travellers to this mesmerising region which is one of the world's best places to observe majestic California gray whales and their newborn calves close up. We believe the small ship experience is far preferable to cruising on a larger vessel and this nimble expedition ship is able to explore remote bays and inlets, inaccessible to other ships. And for a real close up experience the onboard Zodiacs will be utilised. For those who really wish to experience the magic of the wilderness, to come close to nature and enjoy the serenity of the beautiful landscape, the National Geographic Venture is the perfect vessel.

Joining You On Board

One of the most important aspects of expedition cruising is the knowledge of the expert expedition team that accompanies you on board and for the forays ashore. Joining you on board the National Geographic Venture will be a team of naturalists, one expert per 10 guests who provide talks, guidance ashore, and daily camaraderie. The staff will greatly enhance your experience, sharing special insights and searching out pods of dolphins, flying mobula rays, boisterous sea lions, and much more. Each one is not only an expert in their field but passionate about sharing their knowledge and dedicated to seeing that you get the most out of your experience.

ITINERARY HIGHLIGHTS

- Discover vibrant Mexico City and the ancient city of Teotihuacan.
- Travel with a maximum of just 100 fellow passengers and an expert expedition team.
- Board local panga boats to encounter California gray whales and their newborn calves up close in lagoons, and witness breaching humpbacks from the bow of our ship, or on Zodiac excursions.
- Hike desert islands and sculpted sand dunes and look for a variety of wildlife.
- Snorkel with sea lions (conditions permitting) and search for superpods of dolphins amid the pristine coral reefs of Cabo Pulmo National Marine Park.



Mangroves, Magdalena Bay

What to Expect

No two expeditions are the same in Baja California and the itinerary is amended based on weather conditions and wildlife sightings. Below are extracts from logs of previous expeditions in the region with National Geographic-Lindblad Expeditions.

Los Islotes and Espiritu Santo National Park, April 2025: We had a wonderful early morning at Los Islotes, where we enjoyed snorkelling and Zodiac cruising around the island. We observed sea lions, pelicans, and different nesting booby species. The sea lions were gregarious, zipping around the water and leaping out on occasion. We were welcomed back to a delicious breakfast and cruised around enjoying the scenery and wildlife. We saw mobula rays leaping out of the water and flipping through the air. In the afternoon, we found a beautiful beach on the north end of Isla San Jose. It proved to be an incredible spot for our afternoon activities. We set off on hikes along the beach, around the tidal lagoon, and up the arroyo. After a lovely time spent exploring, we were treated to a late afternoon cocktail hour and bonfire on the beach. Delicious snacks, s'mores, and gorgeous views!

Loreto Bay National Marine Park, March 2025: National Geographic Venture awoke to an encapsulated bubble around us. Most of the morning was spent going in and out of fog, but just before lunch it lifted to reveal a glorious look at common dolphins, hundreds of them. Cameras clicked and whirled as we spent the late morning in the presence of these magnificent cetaceans! While some went snorkelling at Isla Coronados, a few of us went on a Zodiac cruise late this afternoon. We picked up a small pod of about 40 common bottlenose dolphins who played with our Zodiac and kept us all entertained. There were at least three calves with the adults, surfacing right beside their mothers. Truly a Day of the Dolphin!



Pyramid of the Moon, Teotihuacan



Cacti

The Itinerary

Day 1 London to Mexico City. Fly by scheduled flight to Mexico City. Arrive in the evening and transfer to the Marriott Reforma Hotel where we will stay for the next four nights. Enjoy a light dinner at the hotel this evening. (D)

Day 2 Mexico City. This morning, we will start our exploration with the immense temple complex of Teotihuacan, once the largest and most populated city in the New World. Built between 250 BC and 700 AD its population at its peak was over 250,000 people. During our visit we will see the Pyramid of the Sun and walk along the Avenue of the Dead. After lunch return to central Mexico City to visit the Basilica of Guadalupe. A cult developed around the site after a Christian convert claimed in 1531 that the Virgin Mary appeared to him. After numerous sightings the lady's image was miraculously emblazoned on his cloak causing a bishop to believe the story and build a shrine in her honour. To this day the basilica remains a place of pilgrimage and worship. The original basilica built in around 1700 was unable to cope with the number of pilgrims and visitors so in the 1970s a new basilica was built next to it and has capacity for 40,000 people. Dinner this evening will be at a local restaurant. (B, L, D)

Day 3 Mexico City. Mexico City was built by the Spanish in the 16th century on the ruins of Tenochtitlan, the old Aztec capital and is now one of the largest cities in the world. It is a city of many contrasts from lively streets to tranquil squares, from ancient ruins to modern shiny high rises and is filled with a vibrant culture and delicious food. This morning before we start our exploration of the city there is an optional tour to visit the Chapultepec Forest with a birding guide. The forest is home to over 200 bird species including hummingbirds, herons, warblers and flycatchers. This morning we will start with a visit to the impressive National Museum of Anthropology. It is the most visited museum in Mexico and holds a wealth of treasures from the country's long history. Learn about the Aztecs, Mexico City and Mexico as a whole. After lunch we will begin to peel away the layers of this historic city with a walking tour through the historic centre. We will pass by the presidential palace, and through the main square, Zocalo, which prior to the colonial period was the main ceremonial centre of the Aztec city. We will also visit the Metropolitan Cathedral of Mexico City, the oldest and largest cathedral in the Americas. Return to the hotel for an evening at leisure. (B, L)



Day 4 Mexico City. Today we will explore the more contemporary history of Mexico City with a visit to the colourful neighbourhood of Coyoacan. Coyoacan is known for its cobbled streets, art galleries, colourful buildings and markets. It is filled with leafy parks that gives it a village feel and was the home of Frida Kahlo. During our exploration we will visit the Church of Coyoacan, the Fonitaca National with its lovely garden and the Jardin Centenario. After lunch we will return to the hotel where the rest of the day is at leisure to relax or continue exploring the city. (B, L)

Day 5 Mexico City to La Paz. This morning we will transfer to Mexico City airport for the direct flight to La Paz in Baja California Sur State. Arrive this afternoon and check into the Catedral Hotel for our overnight stay. We will meet in the evening for dinner. (B, D)

Day 6 La Paz to Loreto. After breakfast we will check out of the hotel and transfer to Loreto. We will drive up the peninsula, taking in the mountainous desert scenery and stopping along the way for lunch before reaching Loreto where we will embark the National Geographic Venture. Dinner will be on board this evening along with welcome drinks. (B, L, D)

Day 7 Bahia Concepcion. Awake in Bahia Concepcion, one of the largest bays of the Baja California peninsula, with over 50 miles of beaches. Step out on deck to witness the colourful landscapes revealed by the first of many gorgeous sunrises. This biodiversity hotspot is a wonder to explore. Take a Zodiac cruise in search of whales and other marine life, kayak through lush mangrove systems, and snorkel in turquoise waters. On land,

Seabirds, Los Islotes



Cabo Pulmo Marine National Park



Sea lions



join an invigorating hike among towering cacti, or stroll the pristine beaches and learn about the ecology from our naturalists. (B, L, D)

Day 8 Exploring the Gulf of California. The Gulf of California is home to great biological diversity, and with some luck, sightings of whales, dolphins, and other sea life are among the highlights of our journey. Our plan is flexible as we explore some of the uninhabited islands sprinkled through these waters. The Captain and Expedition Leader will collaborate to choose the perfect combination of activities for the day. Conditions permitting, we may hike, kayak or paddleboard. Learn about this ecosystem from the naturalists and capture amazing photos with help from your certified photo instructor. (B, L, D)

Day 9 Boca de Soledad. After breakfast we will drive from Puerto Escondido to Puerto Lopez Mateos and settle in for a morning of unforgettable experiences in this tranquil lagoon. Each winter, during their long migration, gray whales travel south from their Arctic feeding grounds to breed and give birth to their calves in these sheltered waters. Together with savvy local fisherman, we will venture out in local pangas to view the numerous mother-calf pairs. With luck, enjoy up-close interactions with these curious creatures. Enjoy lunch at a traditional restaurant before returning to the ship in late afternoon. (B, L, D)

Days 10 to 12 Cabo Pulmo, Los Islotes & Gulf of California. Venture south to discover the gems of the southern Gulf. These islands and surrounding waters are celebrated for their conservation stories, marine life, and the many thrilling experiences on offer. Some of the locations we may visit or enjoy by Zodiac include Cabo Pulmo National Marine Park, Espirito Santo Island - a national park as well as UNESCO World Heritage Site, Los Islotes – home to a large colony of sea lions, and Isla San Jose. (B, L, D)



Banded guitarfishCabo Pulmo Marine National Park

Day 13 Loreto to London. After breakfast, we will disembark the National Geographic Venture and transfer to Loreto airport for our indirect scheduled flight to London. (B)

Day 14 London. Arrive London.

PRICES PER PERSON

Based on double occupancy

SPECIAL OFFER – SAVE £300 PER PERSON FOR A LIMITED TIME ONLY

Cat	Cabin Description	Brochure Price	Special Offer Price
1	Main Deck with two portholes	£11295	£10995
2	Main Deck with two portholes	£11995	£11695
3	Upper Deck with large window	£12795	£12495
4	Upper Deck with sliding door & small balcony	£13495	£13195
5	Observation Deck Suite with large windows	£14495	£14195
1	Main Deck with two portholes for sole use	£15295	£14995
2	Main Deck with two portholes for sole use	£16295	£15995

PRICE INCLUDES: Economy class scheduled air travel • Four nights accommodation at the Marriott Reforma Hotel, Mexico City • Overnight accommodation at the Catedral Hotel, La Paz • Meals as indicated inclusive of drinks with lunch & dinner (B - Breakfast, L - Lunch, D - Dinner) • Seven nights aboard the National Geographic Venture on a full board basis • Alcoholic and soft drinks on board (except certain super premium brands) • Shore excursions • English speaking local guides • Noble Caledonia Tour Manager • Gratuities • Transfers • Airport taxes • Port taxes. **Not Included:** Travel insurance, US ESTA (required for transiting en-route).

FLIGHTS: Please note that flight schedules and routings are yet to be released at the time of promotion. At present, flights from Loreto to London are via the USA. Details will be confirmed approximately 10 months prior to departure. For flights which transit via the USA, passengers will be required to apply for an ESTA.

Optional Bird Watching Tour: On Day 2 of the itinerary an optional bird watching tour in Chapultepec Park is offered. The tour will start at approx. 7am from the hotel and return at approx. 10am in order to start the day's sightseeing. The tour includes a birding guide, transport and use of binoculars should you need them. *A minimum number of eight people will be required for the tour to run.*

NATIONAL GEOGRAPHIC VENTURE



Purpose-built to explore the North American coast, the National Geographic Venture accommodates just 100 guests in 50 outside cabins. The design and engineering of the National Geographic Venture were informed by nearly 40 years of experience of expedition cruising. Her twin boarding platforms, for example, enable the expedition team to load two Zodiacs at once, meaning guests can disembark the ship quickly to take advantage of wildlife sightings and maximise time spent exploring ashore. The vessel features a shallow draft, allowing the Captain to navigate the inner reaches and the onboard Zodiacs offer opportunities to get even closer to the action and land in remote locations. There are also kayaks, paddleboards and snorkelling equipment on board.



Category 4 Cabin



Dining Room



Lounge

Your Cabin

Cabins aboard the National Geographic Venture are an inviting place to end your day of activity. There are a total of 50 outside cabins on board and each one features either two portholes, large windows or step-out balcony. In each cabin, beds can be twin or converted to a Queen. Cabins range in size from 12.6 to 17.3 square metres and feature modern bathrooms, climate controls, hairdryer, Wi-Fi connections and USB ports for mobile devices. You will find organic botanical products in the bathroom.

Your Dining

Meals are served in the dining room at a single seating with unassigned tables, meaning you can dine with whomever you wish. The expedition team will dine alongside guests allowing for opportunities to discuss the highlights of the day and what is to come. The onboard chefs use fresh, local ingredients whenever possible, including locally grown produce, sustainably caught fish, and other local products. An array of fresh fruits and delicious fresh juices are key components of the breakfast buffet, as are fresh vegetables and fish at lunch and dinner. When conditions allow, lighter options may be served outside on the Observation Deck. A selection of drinks including beer and wine are served with lunch and dinner and there is a 24-hour self service beverage station available for tea, coffee and soft drinks.

Your Space

The spacious public areas include the main dining room and the comfortable lounge which features wrap-around windows for optimal views, a full-service bar and state-of-the-art presentation facilities. The lounge is where guests gather daily for talks and recaps. There is also a small reference library with board games. The vessel features a specially designed open bow and the outside deck has been designed as the perfect wildlife viewing platform which is in close proximity to the lounge allowing for instant access to spontaneous wildlife sightings. Outside there is also a partially covered and furnished sundeck with tables, chairs and lounge chairs for relaxing. To ease the embarkation and disembarkations for the daily activities, the vessel features a mudroom with lockers to store expedition gear. Another feature of the ship is the spa and fitness centre staffed by the wellness specialist. There is a shop on board stocked with local artisan products. Internet access, laundry service and a medical professional are available on board, and there is a lift which serves all decks.

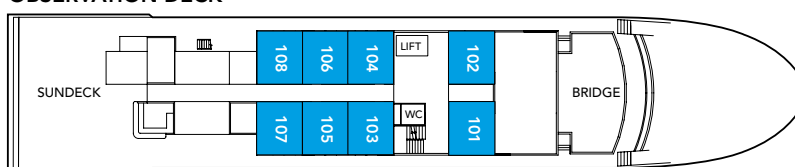
Life On Board

The atmosphere on board is relaxed and informal and focused on the marvellous scenery and wildlife we will be experiencing. Whilst sailing, you can relax on deck with a good book, spend time with the onboard experts looking for wildlife, relax with a massage in the spa, take part in some morning stretches on deck with the wellness specialist or scan the horizon from the open Bridge with the binoculars provided on board. The vessel carries expedition equipment including eight Zodiac landing craft, kayaks, and an underwater video camera. There is a high ratio of crew to passengers and after a day ashore you will return to the comfort and peace of an exceedingly comfortable ship.

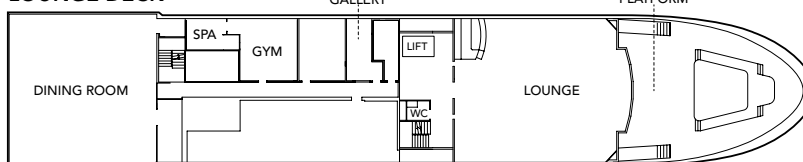


NATIONAL GEOGRAPHIC VENTURE DECK PLAN

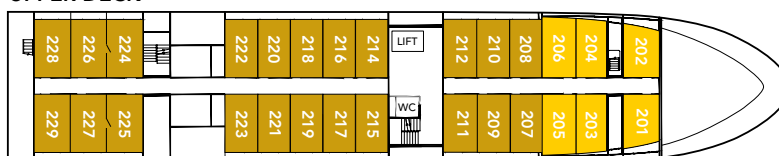
OBSERVATION DECK



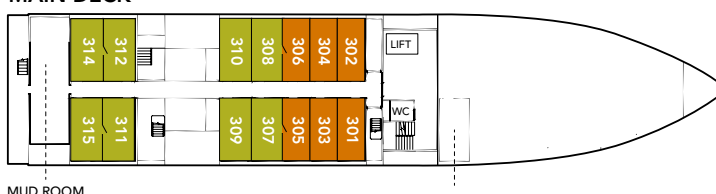
LOUNGE DECK



UPPER DECK



MAIN DECK

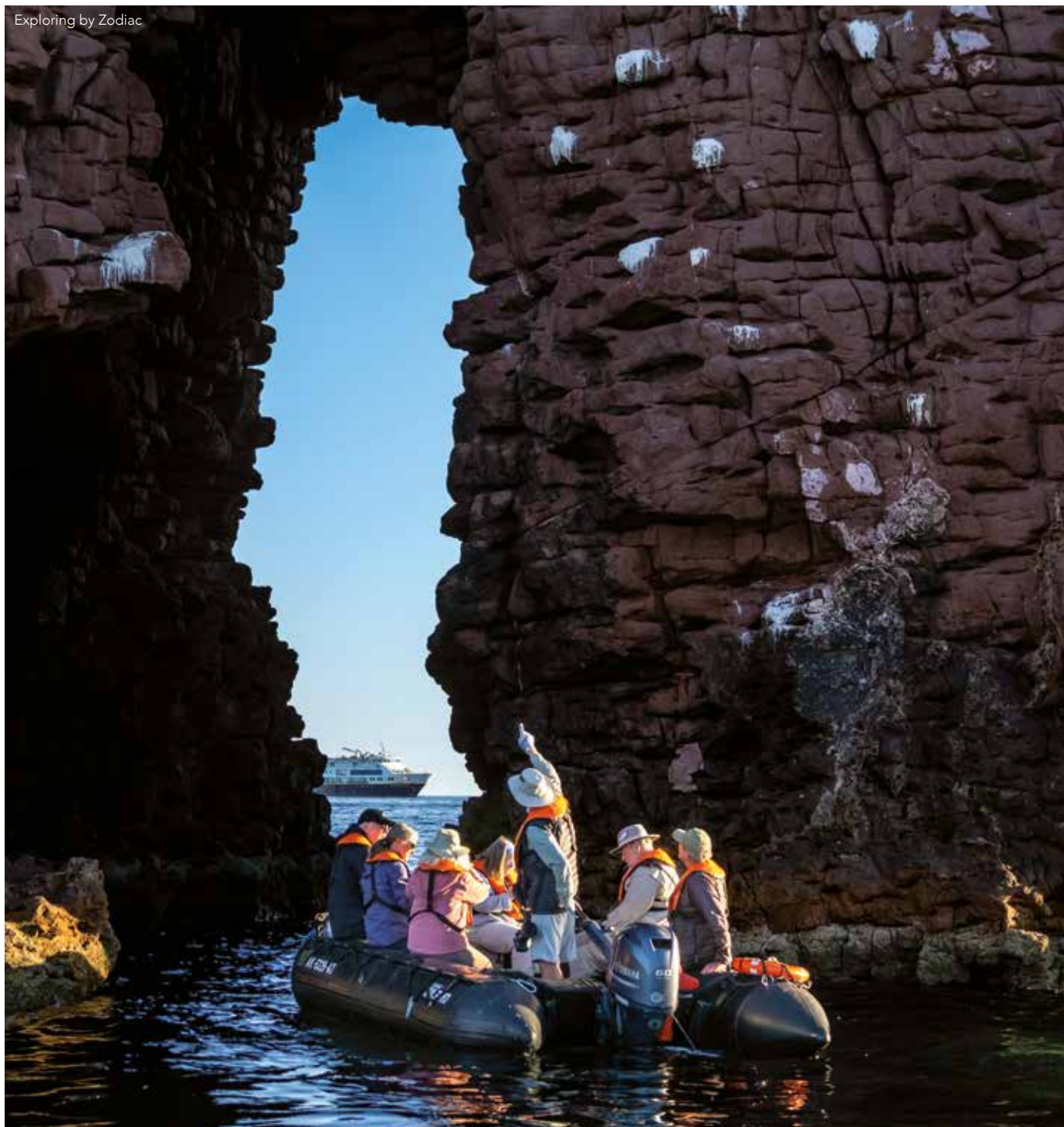


- Cat 1 – Main Deck with two portholes
- Cat 2 – Main Deck with two portholes
- Cat 3 – Upper Deck with large window
- Cat 4 – Upper Deck with sliding door & small balcony
- Cat 5 – Observation Deck Suite with large windows



During this voyage you will be visiting out of the way destinations and will be accompanied by an expedition team. Landings and excursions will be made by Zodiac landing craft. This cruise will appeal to the more adventurous and those who enjoy the natural world.

Exploring by Zodiac



NOBLE CALEDONIA
2 Chester Close, Belgravia, London, SW1X 7BE
+44 (0)20 7752 0000 | info@noble-caledonia.co.uk
www.noble-caledonia.co.uk



All special offers are subject to availability. Our current booking conditions apply to all reservations and are available on request.
Cover image: Grey whale breaching, Baja California.