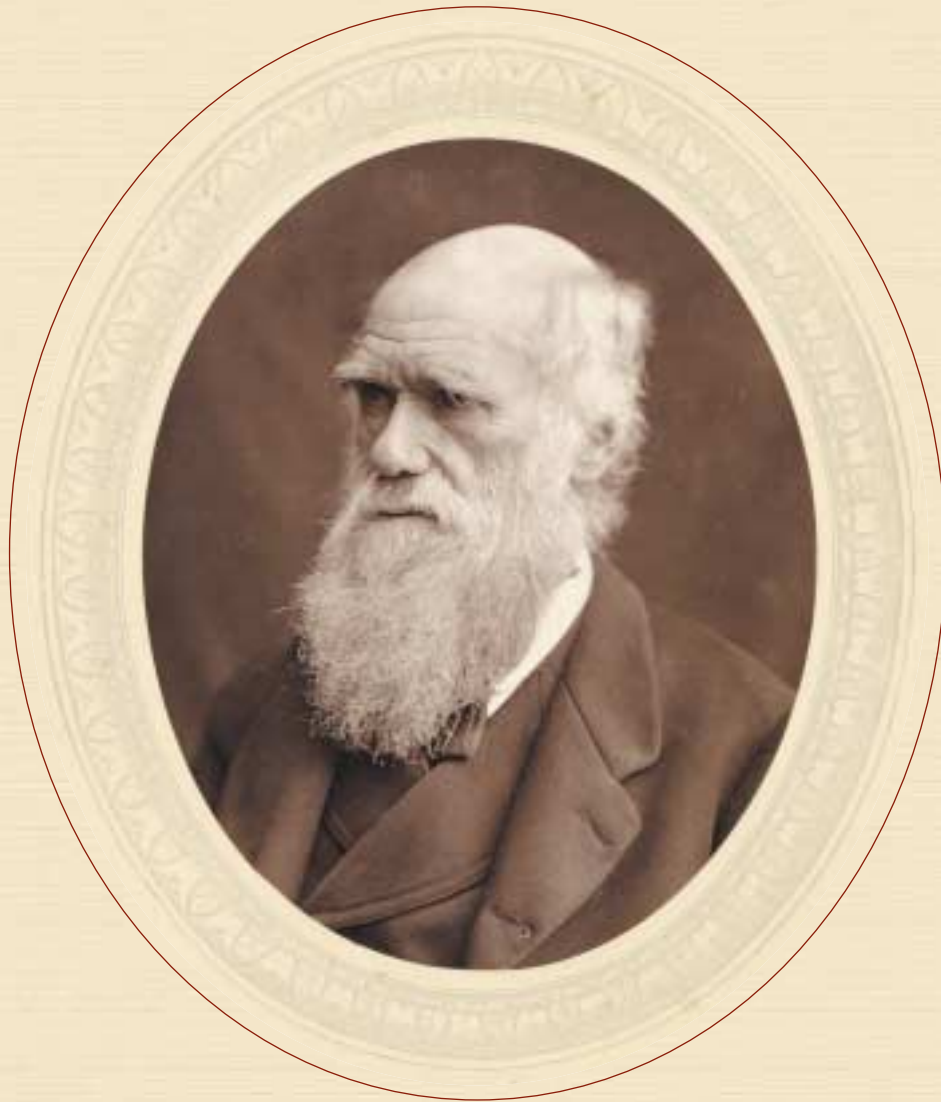


~ 200th Anniversary ~

In the Wake of the Beagle

Celebrate the birth of a genius in the Galapagos archipelago
aboard the newly built *Queen Beatriz*

2009



NOBLE CALEDONIA



Marine iguana

It was Charles Darwin who put the Galapagos on the map. Through his love of natural sciences, he was chosen as naturalist to join Captain Fitzroy on his world expedition aboard the *HMS Beagle*, setting sail on 27th December 1831. True, the islands were discovered some three hundred years earlier, but Darwin's five week stay in the Galapagos during the expedition altered the course of human thought and history.

2009 marks the 200th anniversary of the birth of Charles Robert Darwin, and the 150th anniversary of the publication of *On the Origin of Species* which established Darwin as one of the best thinkers of all time. To commemorate, we are offering a number of cruises in the Galapagos Archipelago.

One of the most amazing aspects of the Galapagos is that even today the archipelago is much the same as in Darwin's time, a veritable 'Garden of Eden'. Largely unspoiled by development, it is a place where fascinating and diverse wildlife is both abundant and fearless of man. Here you can swim with dolphins and Galapagos penguins, walk amongst giant tortoises, watch basking marine iguanas and be endlessly fascinated by the colourful and exotic birdlife.

Today, there are a number of vessels cruising around the islands of the Galapagos ranging in size from six to a hundred passengers. For those who prefer a more intimate experience, we are delighted to introduce the *Queen Beatriz*.



Giant tortoise



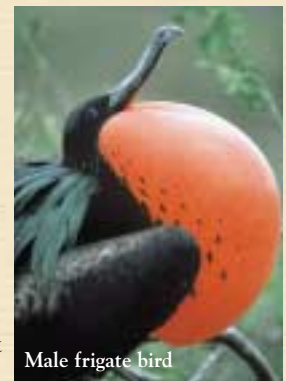
The Itinerary

Day 1 London Heathrow to Quito. Fly by scheduled flight via Madrid. On arrival you will be transferred to your hotel for an overnight stay.

Day 2 Baltra. This morning we fly to Baltra in the Galapagos Islands. Upon arrival we are met by our naturalist guide and transferred to the *Queen Beatriz* to embark. Visit Bachas Beach in the afternoon.

Day 3 Floreana. Reach Floreana Island in the morning and stop at Post Office Bay. Still in use, this historic site is where mariners from around the world would deposit and collect letters from a 'post office barrel,' to be brought home by returning sailors. Visitors place unstamped letters and cards in the barrel and deliver, free of charge, any addressed to their own hometowns. Later in the afternoon we make our way towards Punta Cormorant on the northern part of Floreana and head to Flour Beach, an important nesting site for turtles. We may also see flamingos and occasionally penguins.

Day 4 Española. Today we head to Punta Suarez on Española Island. The southernmost island in the Galapagos is home to several wildlife species, including masked and blue-footed boobies. In the afternoon sail to Gardner Bay, an excellent swimming and snorkelling site.



Male frigate bird



Bartolomé Island

Day 5 Santa Cruz. This morning finds us in Puerto Ayora, on Santa Cruz Island. Later, visit the Charles Darwin Station to see giant tortoises and learn about Darwin's studies of the Galapagos wildlife. There is also free time to explore or do some shopping. In the afternoon we visit the highlands to see the giant land tortoises.

Day 6 Rabida. We will make our way to Rabida Island to visit a water salt lagoon rich in wildlife and vegetation. A large sea lion colony provides great photo opportunities.

Day 7 Bartolomé. Arrive at Bartolomé Island early in the morning. Learn the geological history of Bartolomé as our naturalist guide explains its dramatic volcanic features, including unusual splatter cones. We may spot rare Galapagos Penguins, of which only 800 pairs exist.

Day 8 Santa Fé. Reach Santa Fé Island early in the morning, and learn from our naturalist guide how mangrove trees survive in the harsh environment. Learn about the features and habits of the Galapagos' prehistoric-looking marine iguanas.

Day 9 North Seymour/Quito. Sail to Baltra on Santa Cruz Island and enjoy a brief visit to North Seymour for one last look at frigate birds, blue-footed boobies and sea lions. Transfer to the airport for our flight to Quito. On arrival you will be transferred to your hotel for an overnight stay.



Blue-footed boobies

Day 10 Quito to London. Morning at leisure before the transfer to the airport for your afternoon scheduled flight to London Heathrow via Madrid.

Day 11 London Heathrow. Arrive this morning.

2009 Departure dates and prices per person

Based on double occupancy Tour Code: SCQBGALAP

25TH APRIL; 30TH MAY; 20TH JUNE;
12TH, 26TH SEPTEMBER; 6TH, 17TH OCTOBER;
7TH, 21ST NOVEMBER

Standard cabin	£2995
Suite	£3195
Deluxe cabin with balcony	£3395
Standard cabin for sole use	£4795
Deluxe cabin for sole use	£5195

Price includes: Economy class scheduled air travel, two nights hotel accommodation in Quito on breakfast only basis, seven nights aboard the *Queen Beatriz* on full board, shore excursions, local and port taxes, UK airport tax, transfers, guide/naturalist on Galapagos, snorkelling equipment.

Not included: Travel insurance, gratuities, Galapagos Park entrance fee (\$100 to be paid locally), local departure tax, Galapagos Transit Card (\$10 to be paid locally).

NB. Ports and itinerary subject to change and local weather conditions.

Extensions are available to the Amazon and Peru. Details available on request or on our website www.noble-caledonia.co.uk



Basking sea lions



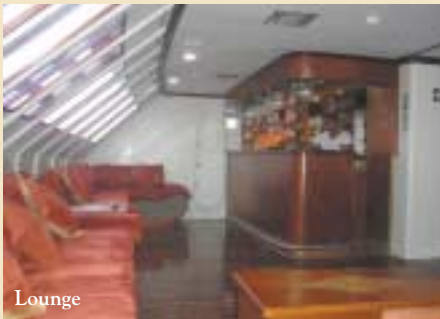
Queen Beatriz

Managed by G.A.P Adventures, the *Queen Beatriz* is the newest and most comfortable addition to their fleet. This brand new 16-passenger motor catamaran has 8 air-conditioned double-occupancy cabins with lower berths and private bathrooms. There are four deluxe cabins with a balcony (two have double beds and two have twin beds); one suite (double bed) with a seating area and window; and three standard cabins with fixed twin beds and a window.

The ship features special amenities such as a hydro-massage 4-person Jacuzzi plus spacious outside decks for relaxing, a dining room and a bar. Experienced onboard staff includes a Level III bilingual naturalist guide certified by the Galapagos National Park Authority, as well as a dedicated Cruise Director ensuring you are in good hands both onboard and on land.



Dining room



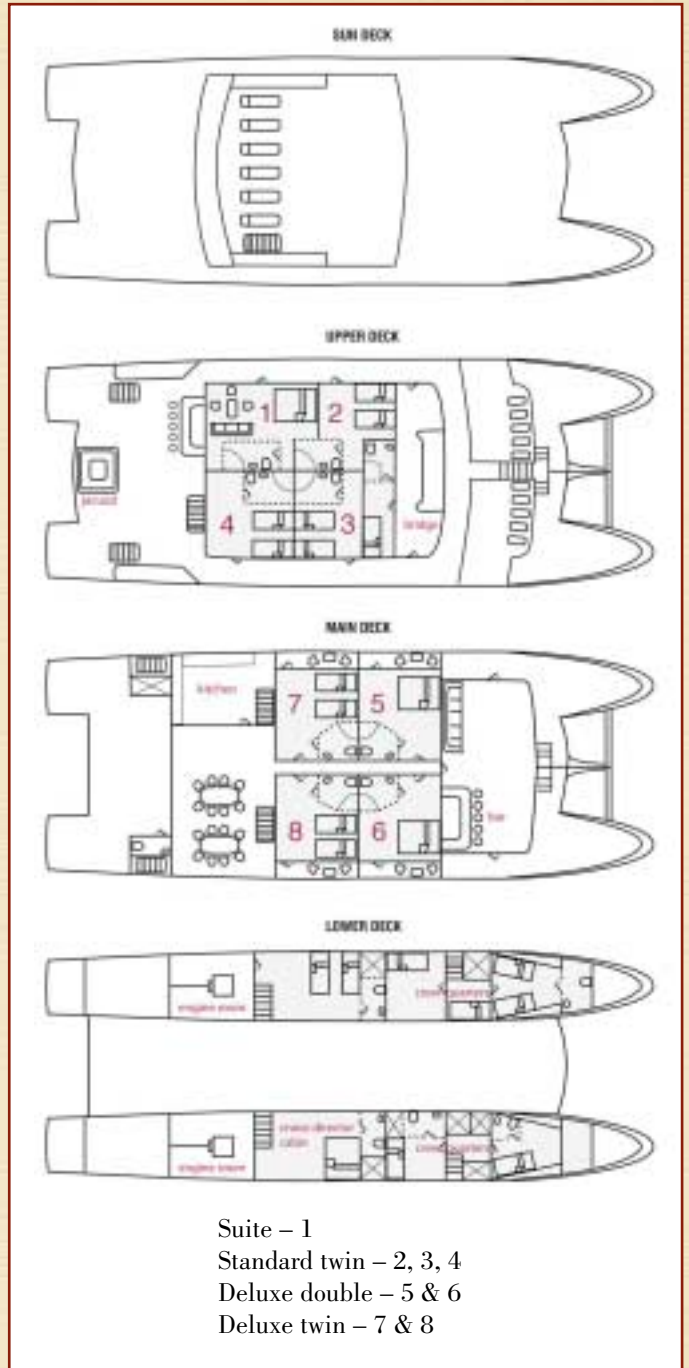
Lounge



Cabin



Suite



- Suite – 1
- Standard twin – 2, 3, 4
- Deluxe double – 5 & 6
- Deluxe twin – 7 & 8

EXPEDITION
CRUISING

This cruise visits out of the way destinations. You will be accompanied by an expedition team and many landings ashore will be made by Zodiac landing craft. This cruise will appeal to the more adventurous and those who enjoy the natural world.

Call 020-7752 0000

Reservations: Monday to Saturday from 9am to 5pm. Brochures: 24 hours a day/7 days a week

NOBLE CALEDONIA

www.noble-caledonia.co.uk

2 CHESTER CLOSE, BELGRAVIA, LONDON SW1X 7BE
info@noble-caledonia.co.uk Fax: 020 7245 0388





The air holidays and flights in this brochure are ATOL protected by the Civil Aviation Authority
Our current booking conditions apply to all reservations (available on request)

